

2015



PERFECT VAGUUM SOLUTION

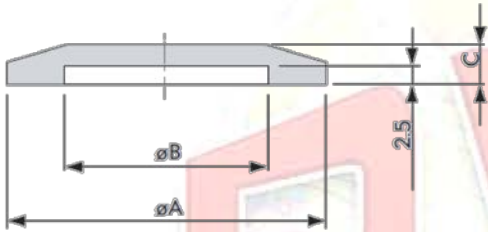


# CONTENTS

KF Series	1
ISO Series	2
CF Series	3
Fitting	4
Bellows	5
Adaptor	6
Center Ring	7
Vacuum Valve	8
Gate Valve	9



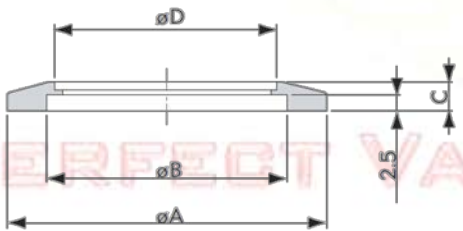
**KF Blank**



\*\*SS316, Aluminum upon request

Model No.	Material	A	B	C
BS-KF10	SS304	30	12.2	5
BS-KF16	SS304	30	17.2	5
BS-KF25	SS304	40	26.2	5
BS-KF40	SS304	55	41.2	5
BS-KF50	SS304	75	52.2	5
BS-KF63	SS304	87	70	5
BS-KF80	SS304	83	83	12
BS-KF100	SS304	102	102	12
BS-KF160	SS304	190	153	12

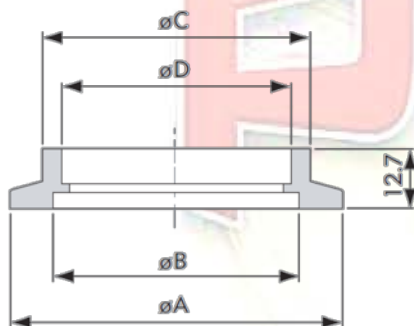
**KF Bored blank**



\*\*SS316, Aluminum upon request

Model No.	Material	A	B	C	D
BB-KF10B12	SS304	30	12.2	5	12.9
BB-KF16B19	SS304	30	17.2	5	19.3
BB-KF25B25	SS304	40	26.2	5	25.7
BB-KF40B38	SS304	55	41.2	5	38.4
BB-KF50B51	SS304	75	52.2	5	51
BB-KF63B63	SS304	87	70	5	63.7
BB-KF80B76	SS304	114	83	12	76.4
BB-KF100B102	SS304	134	102	12	101.8
BB-KF160B153	SS304	190	153	12	152.9

**KF Socket Weld flange**



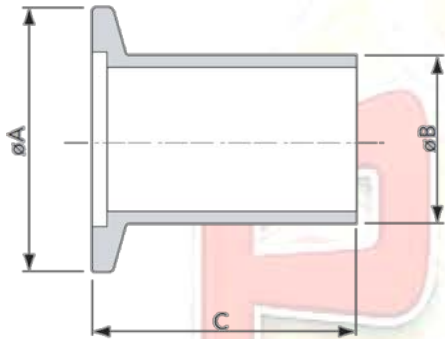
\*\*SS316, Aluminum upon request

Model No.	Material	A	B	C	D
SW-KF10	SS304	30	12.2	16.5	13
SW-KF16	SS304	30	17.2	20.5	19.3
SW-KF25	SS304	40	26.2	29	25.7
SW-KF40	SS304	55	41.2	44.7	38.4
SW-KF50	SS304	75	52.2	57.4	51.0
SW-KF63	SS304	87	70	67.5	63.7
SW-KF80	SS304	114	83	98	89.5
SW-KF100	SS304	134	102	118	114.5
SW-KF160	SS304	190	153	174	165.5



PERFECT VACUUM SOLUTION

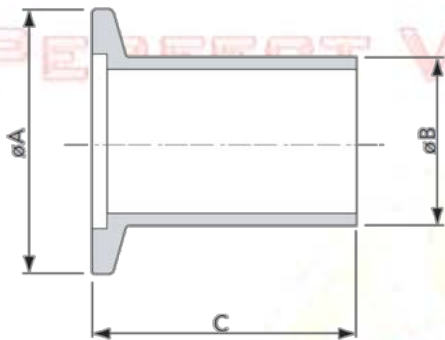
**KF Half Short / Long Nipple (USA Type)**



Model No.	Material	A	B	C	S/L
SHNSA-KF10	SS304	30	12.7	12.7	Short
SHNSA-KF16	SS304	30	19.05	12.7	Short
SHNSA-KF25	SS304	40	25.4	12.7	Short
SHNSA-KF40	SS304	55	38.1	19.1	Short
SHNSA-KF50	SS304	75	50.8	19.1	Short
LHNSA-KF10	SS304	30	12.7	40	Long
LHNSA-KF16	SS304	30	19.05	40	Long
LHNSA-KF25	SS304	40	25.4	40	Long
LHNSA-KF40	SS304	55	38.1	40	Long
LHNSA-KF50	SS304	75	50.8	40	Long

\*\*SS316, Aluminum upon request

**KF Half Short / Long Nipple (EUrope Type)**

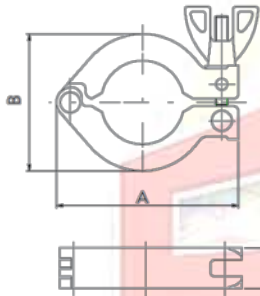


Model No.	Material	A	B	C	S/L
SHNSE-KF10	SS304	30	14	30	Short
SHNSE-KF16	SS304	30	20	30	Short
SHNSE-KF25	SS304	40	28	30	Short
SHNSE-KF40	SS304	55	45	30	Short
SHNSE-KF50	SS304	75	57	30	Short
LHNSE-KF10	SS304	30	14	70	Long
LHNSE-KF16	SS304	30	20	70	Long
LHNSE-KF25	SS304	40	28	70	Long
LHNSE-KF40	SS304	55	45	70	Long
LHNSE-KF50	SS304	75	57	70	Long

\*\*SS316, Aluminum upon request

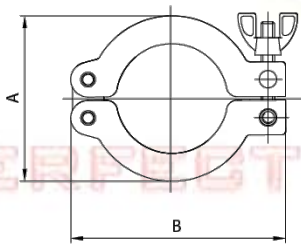


**KF Clamp One Pin**



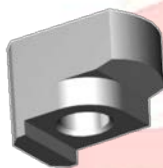
Model No.	Material	A	B	C
CLA-KF16	Aluminum	63	42.5	16
CLA-KF25	Aluminum	72	54	16
CLA-KF40	Aluminum	90	70	16
CLA-KF50	Aluminum	114	90	20
CLA-NP-KF16	Alu+ Nickel Plating	63	42.5	16
CLA-NP-KF25	Alu+ Nickel Plating	72	54	16
CLA-NP-KF40	Alu+ Nickel Plating	90	70	16
CLA-NP-KF50	Alu+ Nickel Plating	114	90	20

**KF Clamp TWO Pin**



Model No.	Material	A	B	C
CLAE-KF16	Aluminum	42.5	63	16
CLAE-KF25	Aluminum	54	72	16
CLAE-KF40	Aluminum	70	90	16
CLAE-KF50	Aluminum	90	114	20
CLAE-NP-KF16	Alu+ Nickel Plating	42.5	63	16
CLAE-NP-KF25	Alu+ Nickel Plating	54	72	16
CLAE-NP-KF40	Alu+ Nickel Plating	70	90	16
CLAE-NP-KF50	Alu+ Nickel Plating	90	114	20

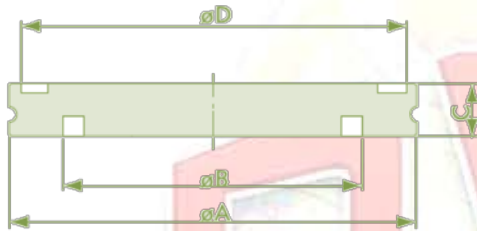
**Nail Clamp**



Model No.	Material	Fit Size	Qty
NCA KF	Aluminum	10	3
NCA KF	Aluminum	16	3
NCA KF	Aluminum	25	4
NCA KF	Aluminum	40	4
NCA KF	Aluminum	50	6



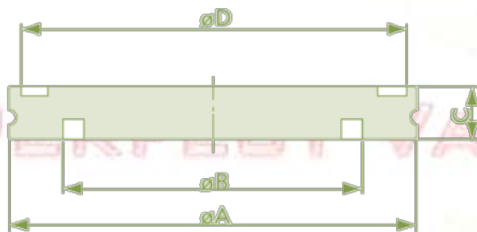
**ISO Blank**



Model No.	Material	A	B	C	D
BS-ISO63	SS304	95	70	12	90
BS-ISO80	SS304	110	83	12	105
BS-ISO100	SS304	130	102	12	125
BS-ISO160	SS304	180	153	12	175
BS-ISO200	SS304	240	213	12	235
BS-ISO250	SS304	290	261	12	285
BS-ISO320	SS304	370	318	17	365
BS-ISO400	SS304	450	400	17	445
BS-ISO500	SS304	550	501	17	545

\*\*SS316, Aluminum upon request

**ISO BORED Blank**



Model No.	Material	A	B	C	D	E
BB-ISO63B63	SS304	95	70	12	90	63.7
BB-ISO80B76	SS304	110	83	12	105	76.4
BB-ISO100B102	SS304	130	102	12	125	101.8
BB-ISO160B153	SS304	180	153	12	175	152.9
BB-ISO200B204	SS304	240	213	12	235	203.7
BB-ISO250B255	SS304	290	261	12	285	254.5
BB-ISO320B305	SS304	370	318	17	365	305.3
BB-ISO400B407	SS304	450	400	17	445	406.9
BB-ISO500B509	SS304	550	501	17	545	508.8

\*\*SS316, Aluminum upon request

**ISO Rotatable bolt ring**



Model No.	Material	A	B	C	D	PCD
RBR-ISO63	SS304	130	98.5	12	9x4	110
RBR-ISO80	SS304	145	113.5	12	9x8	125
RBR-ISO100	SS304	165	133.5	12	9x8	145
RBR-ISO160	SS304	225	185.7	16	11x8	200
RBR-ISO200	SS304	285	245.7	16	11x12	260
RBR-ISO250	SS304	335	295.7	16	11x12	310
RBR-ISO320	SS304	425	375.8	20	14x12	395
RBR-ISO400	SS304	510	458.8	20	14x16	480
RBR-ISO500	SS304	610	558.8	20	14x16	580

\*\*SS316, Aluminum upon request

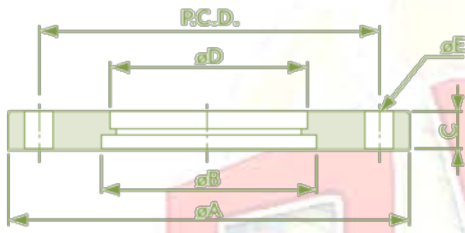


PERFECT VACUUM SOLUTION

**PVS Perfect Vacuum Solution**

info@pvs-vacuum.com

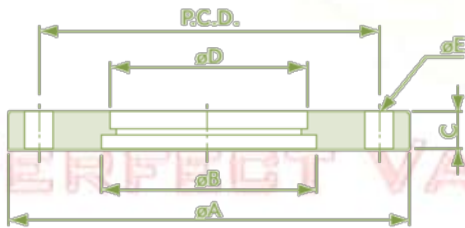
**ISO Bolted flange**



Model No.	A	B	C	D	E	P.C.D
BF-ISO63	130	70	12	63.7	9x4	110
BF-ISO80	145	83	12	76.4	9x8	125
BF-ISO100	165	102	12	101.8	9x8	145
BF-ISO160	225	153	16	152.9	11x8	200
BF-ISO200	285	213	16	203.7	11x12	260
BF-ISO250	335	261	16	254.5	11x12	310
BF-ISO320	425	318	20	305.3	14x12	395
BF-ISO400	510	400	20	406.9	14x16	480
BF-ISO500	610	501	20	508.8	14x16	580

\*\*SS304 available. SS316, Aluminum upon request

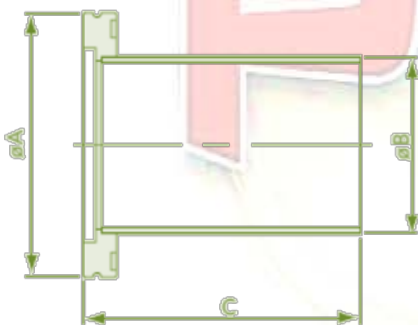
**ISO Bolted flange - taped**



Model No.	A	B	C	D	E	P.C.D
BFTAP-ISO63	130	70	12	63.7	M8x4	110
BFTAP-ISO80	145	83	12	76.4	M8x8	125
BFTAP-ISO100	165	102	12	101.8	M8x8	145
BFTAP-ISO160	225	153	16	152.9	M10x8	200
BFTAP-ISO200	285	213	16	203.7	M10x12	260
BFTAP-ISO250	335	261	16	254.5	M10x12	310
BFTAP-ISO320	425	318	20	305.3	M10x12	395
BFTAP-ISO400	510	400	20	406.9	M12x16	480
BFTAP-ISO500	610	501	20	508.8	M12x16	580

\*\*SS304 available. SS316, Aluminum upon request

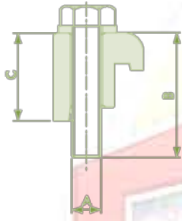
**ISO half nipple**



Model No.	Material	A	B	C
HN-ISO63	SS304	95	63.5	100
HN-ISO80	SS304	110	76.2	100
HN-ISO100	SS304	130	101.6	100
HN-ISO160	SS304	180	152.4	100
HN-ISO200	SS304	240	203.2	100
HN-ISO250	SS304	290	254.0	100
HN-ISO320	SS304	370	304.8	100
HN-ISO400	SS304	450	406.8	100
HN-ISO500	SS304	550	508.0	100

\*\*SS316 upon request

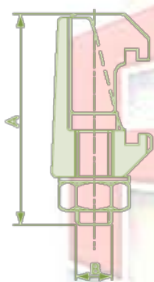


**ISO Single wall clamp**

Model No.	Material	A	B	C
SWC304-ISO63/100	SS304	M8	35	23
SWC304-ISO160/250	SS304	M10	35	23
SWC304-ISO320/500	SS304	M12	50	30
SWCZP-ISO63/100	Steel+Zn Pated	M8	35	23
SWCZP-ISO160/250	Steel+Zn Pated	M10	35	23
SWCZP-ISO320/500	Steel+Zn Pated	M12	50	30
SWCA-ISO63/100	Aluminum	M8	35	23
SWCA-ISO160/250	Aluminum	M10	35	23
SWCA-ISO320/500	Aluminum	M12	50	30

**ISO double wall clamp**

Model No.	Material	A	Bolt size
DWCA-ISO63/100	Aluminum	45	M8
DWCA-ISO160/250	Aluminum	45	M10
DWCA-ISO320/500	Aluminum	45	M12

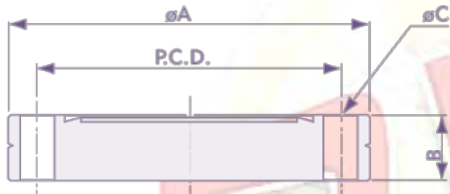
**ISO DOUBLE CLAW clamp**

Model No.	Material	A	B
DCC316-ISO63/100	SS316	61.5	M10
DCC316-ISO160/250	SS316	76.0	M12
DCC316-ISO320/500	SS316	86.0	M12
DCCZP-ISO63/100	Steel+Zn Pated	61.5	M10
DCCZP-ISO160/250	Steel+Zn Pated	76.0	M12
DCCZP-ISO320/500	Steel+Zn Pated	86.0	M12





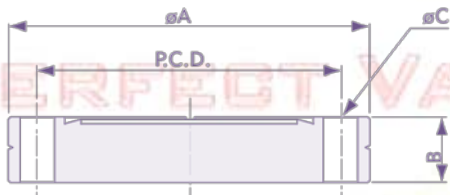
**cF Blank NO RORTABLE**



Model No.	Material	A	B	C	PCD
BS-CF16	SS304	33.8	7.5	4.4x6	26.9
BS-CF35	SS304	69.5	12.7	6.7x6	58.7
BS-CF63	SS304	113.6	18.0	8.4x6	92.1
BS-CF100	SS304	151.6	20.0	8.4x16	130.3
BS-CF150	SS304	202.5	22.0	8.4x20	181
BS-CF200	SS304	253.2	24.7	8.4x24	231.8
BS-CF250	SS304	336.5	28.5	10.3x30	306.5
BS-CF300	SS304	355.6	28.5	10.3x30	325.7
BS-CF350	SS304	419.1	28.5	103.3x36	388.9

\*\*SS316 upon request

**cF Blank NO RORTABLE, TAPPED BOLT HOLES**

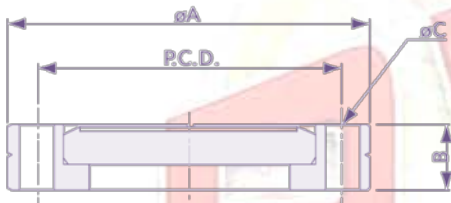


Model No.	Material	A	B	C	PCD
BSTAP-CF16	SS304	33.8	7.5	4.4x6	26.9
BSTAP-CF35	SS304	69.5	12.7	6.7x6	58.7
BSTAP-CF63	SS304	113.6	18.0	8.4x6	92.1
BSTAP-CF100	SS304	151.6	20.0	8.4x16	130.3
BSTAP-CF150	SS304	202.5	22.0	8.4x20	181
BSTAP-CF200	SS304	253.2	24.7	8.4x24	231.8
BSTAP-CF250	SS304	336.5	28.5	10.3x30	306.5
BSTAP-CF300	SS304	355.6	28.5	10.3x30	325.7
BSTAP-CF350	SS304	419.1	28.5	103.3x36	388.9

\*\*SS316 upon request



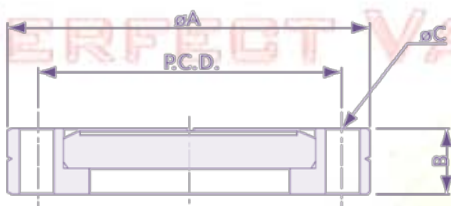
**cF Blank RORTABLE**



Model No.	Material	A	B	C	PCD
BS-CR16	SS304	33.8	7.5	4.4x6	26.9
BS-CR35	SS304	69.5	12.7	6.7x6	58.7
BS-CR63	SS304	113.6	18.0	8.4x6	92.1
BS-CR100	SS304	151.6	20.0	8.4x16	130.3
BS-CR150	SS304	202.5	22.0	8.4x20	181
BS-CR200	SS304	253.2	24.7	8.4x24	231.8
BS-CR250	SS304	336.5	28.5	10.3x30	306.5
BS-CR300	SS304	355.6	28.5	10.3x30	325.7
BS-CR350	SS304	419.1	28.5	103.3x36	388.9

\*\*SS316 upon request

**cF Blank RORTABLE, TAPPED BOLT HOLES**



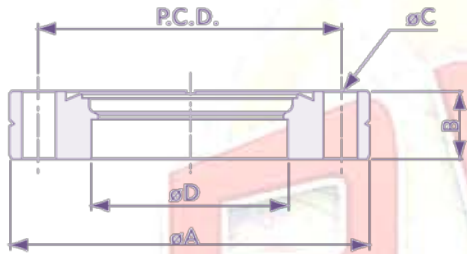
Model No.	Material	A	B	C	PCD
BSTAP-CR16	SS304	33.8	7.5	4.4x6	26.9
BSTAP -CR35	SS304	69.5	12.7	6.7x6	58.7
BSTAP -CR63	SS304	113.6	18.0	8.4x6	92.1
BSTAP -CR100	SS304	151.6	20.0	8.4x16	130.3
BSTAP-CR150	SS304	202.5	22.0	8.4x20	181
BSTAP-CR200	SS304	253.2	24.7	8.4x24	231.8
BSTAP-CR250	SS304	336.5	28.5	10.3x30	306.5
BSTAP-CR300	SS304	355.6	28.5	10.3x30	325.7
BSTAP-CR350	SS304	419.1	28.5	103.3x36	388.9

\*\*SS316 upon request



PERFECT VACUUM SOLUTION

**cF BORED FLANGE nonrotatabl**

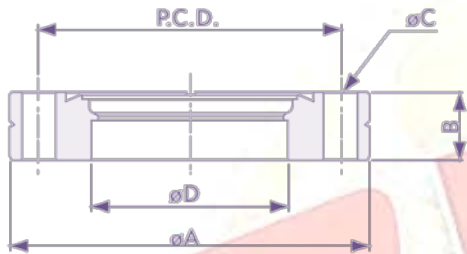


Model No.	A	B	C	D	PCD
BF-CF16B7	33.8	7.5	4.4x6	6.5	26.9
BF-CF16B12	33.8	7.5	4.4x6	12.9	26.9
BF-CF16B19	33.8	7.5	4.4x6	19.15	26.9
BF-CF35B25	69.5	12.7	6.7x6	25.6	58.7
BF-CF35B35	69.5	12.7	6.7x6	38.3	58.7
BF-CF35B42	69.5	12.7	6.7x6	42.9	58.7
BF-CF63B51	113.6	18	8.4x8	51.1	92.1
BF-CF63B63	113.6	18	8.4x8	63.7	92.1
BF-CF100B102	1151.6	20	8.4x16	101.8	130.3
BF-CF150B153	202.5	22	8.4x20	153.1	181
BF-CF200B204	253.2	24.7	8.4x24	203.7	231.8
BF-CF250B255	336.2	28.5	10.3x30	254.5	306.5
BF-CF300B305	355.6	28.5	10.3x30	305.4	325.7
BF-CF350B356	419.1	28.5	10.3x36	356.1	388.9

\*\*SS304 available, SS316 upon request

**PERFECT VACUUM SOLUTION**

**cF BORED FLANGE nonrotatabl, tapped bolted holes**



Model No.	A	B	C	D	PCD
BFTAP-CF16B7	33.8	7.5	M4x6	6.5	26.9
BFTAP-CF16B12	33.8	7.5	M4x6	12.9	26.9
BFTAP-CF16B19	33.8	7.5	M4x6	19.15	26.9
BFTAP-CF35B25	69.5	12.7	M6x6	25.6	58.7
BFTAP-CF35B35	69.5	12.7	M6x6	38.3	58.7
BFTAP-CF35B42	69.5	12.7	M6x6	42.9	58.7
BFTAP-CF63B51	113.6	18	M8x8	51.1	92.1
BFTAP-CF63B63	113.6	18	M8x8	63.7	92.1
BFTAP-CF100B102	1151.6	20	M8x16	101.8	130.3
BFTAP-CF150B153	202.5	22	M8x20	153.1	181
BFTAP-CF200B204	253.2	24.7	M8x24	203.7	231.8
BFTAP-CF250B255	336.2	28.5	M10x30	254.5	306.5
BFTAP-CF300B305	355.6	28.5	M10x30	305.4	325.7
BFTAP-CF350B356	419.1	28.5	M10x36	356.1	388.9

\*\*SS304 available, SS316 upon request

**PERFECT VACUUM SOLUTION**

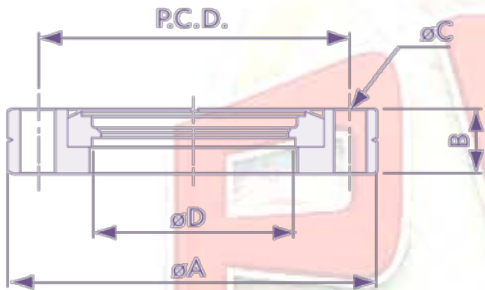


PERFECT VACUUM SOLUTION

**PVS Perfect Vacuum Solution**

info@pvs-vacuum.com

**cF BORED FLANGE rotatabl**

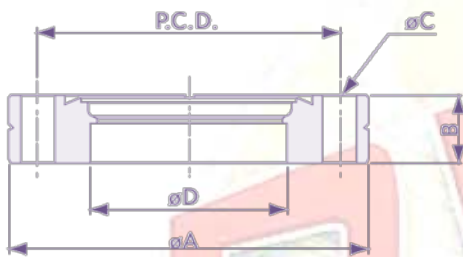


Model No.	A	B	C	D	PCD
BF-CR16B7	33.8	7.5	4.4x6	6.5	26.9
BF-CR16B12	33.8	7.5	4.4x6	12.9	26.9
BF-CR16B19	33.8	7.5	4.4x6	19.15	26.9
BF-CR35B25	69.5	12.7	6.7x6	25.6	58.7
BF-CR35B35	69.5	12.7	6.7x6	38.3	58.7
BF-CR35B42	69.5	12.7	6.7x6	42.9	58.7
BF-CR63B51	113.6	18	8.4x8	51.1	92.1
BF-CR63B63	113.6	18	8.4x8	63.7	92.1
BF-CR100B102	1151.6	20	8.4x16	101.8	130.3
BF-CR150B153	202.5	22	8.4x20	153.1	181
BF-CR200B204	253.2	24.7	8.4x24	203.7	231.8
BF-CR250B255	336.2	28.5	10.3x30	254.5	306.5
BF-CR300B305	355.6	28.5	10.3x30	305.4	325.7
BF-CR350B356	419.1	28.5	10.3x36	356.1	388.9

\*\*SS304 available, SS316 upon request

PERFECT VACUUM SOLUTION

**cF BORED FLANGE rotatabl, tapped bolted holes**



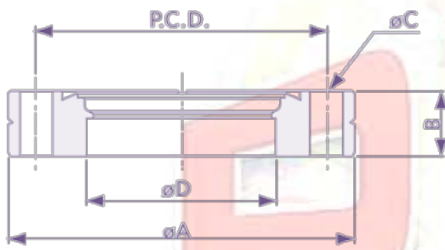
Model No.	A	B	C	D	PCD
BFTAP-CR16B7	33.8	7.5	M4x6	6.5	26.9
BFTAP-CR16B12	33.8	7.5	M4x6	12.9	26.9
BFTAP-CR16B19	33.8	7.5	M4x6	19.15	26.9
BFTAP-CR35B25	69.5	12.7	M6x6	25.6	58.7
BFTAP-CR35B35	69.5	12.7	M6x6	38.3	58.7
BFTAP-CR35B42	69.5	12.7	M6x6	42.9	58.7
BFTAP-CR63B51	113.6	18	M8x8	51.1	92.1
BFTAP-CR63B63	113.6	18	M8x8	63.7	92.1
BFTAP-CR100B102	1151.6	20	M8x16	101.8	130.3
BFTAP-CR150B153	202.5	22	M8x20	153.1	181
BFTAP-CR200B204	253.2	24.7	M8x24	203.7	231.8
BFTAP-CR250B255	336.2	28.5	M10x30	254.5	306.5
BFTAP-CR300B305	355.6	28.5	M10x30	305.4	325.7
BFTAP-CR350B356	419.1	28.5	M10x36	356.1	388.9

\*\*SS304 available, SS316 upon request

PERFECT VACUUM SOLUTION



**cF REDUCING FLANGE**



Model No.	A	B	C	D	E	F	G
RF-CF35/16	69.5	12.7	15.8	26.9	58.7	6.7x6	M4x6
RF-CF63/16	113.6	18	15.8	26.9	92.1	8.4x8	M4x6
RF-CF63/35	113.6	18	38.1	58.7	92.1	8.4x8	M6x6
RF-CF100/35	151.6	20	38.1	58.7	130.3	8.4x16	M6x6
RF-CF100/63	151.6	20	63.5	92.1	130.3	8.4x16	M6x8
RF-CF150/35	202.5	22	38.1	58.7	181	8.4x20	M6x6
RF-CF150/63	202.5	22	63.5	92.1	181	8.4x20	M8x8
RF-CF150/100	202.5	22	101.6	130.3	181	8.4x20	M8x16
RF-CF200/35	253.2	24.7	38.1	58.7	231.8	8.4x24	M6x6
RF-CF200/63	253.2	24.7	63.5	92.1	231.8	8.4x24	M8x8
RF-CF200/100	253.2	24.7	101.6	130.3	231.8	8.4x24	M8x16
RF-CF200/150	253.2	24.7	152.4	181	231.8	8.4x24	M8x20
RF-CF250/35	336.5	28.5	38.1	58.7	306.5	10.3x30	M6x6
RF-CF250/63	336.5	28.5	63.5	92.1	306.5	10.3x30	M8x8
RF-CF250/100	336.5	28.5	101.6	130.3	306.5	10.3x30	M8x16
RF-CF250/150	336.5	28.5	152.4	181	306.5	10.3x30	M8x20
RF-CF250/200	336.5	28.5	203.2	231.8	306.5	10.3x30	M8x24

\*\*SS304 available, SS316 upon request

PERFECT VACUUM SOLUTION



PERFECT VACUUM SOLUTION



**cF Half Nipple**

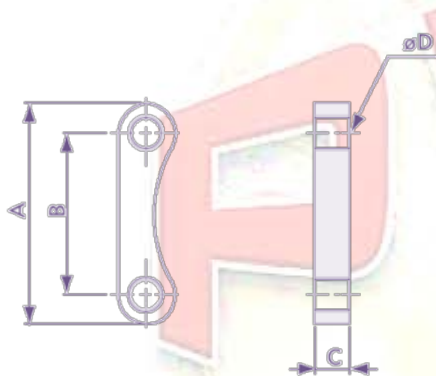


Nonrotatable	A	B	C	Rotatable
HN-CF16	33.8	38	19.05	HN-CR16
HN-CF35	69.5	63	38.1	HN-CR35
HN-CF63	113.6	105	63.5	HN-CR63
HN-CF100	151.6	135	101.6	HN-CR100
HN-CF150	202.5	167	152.4	HN-CR150
HN-CF200	253.2	167	203.2	HN-CR200

\*\*SS304 available, SS316 or customized length upon request

PERFECT VACUUM SOLUTION

**cF Plate Nut**

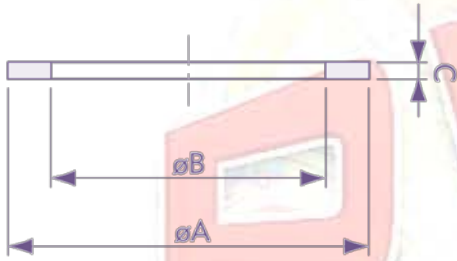


Model No.	Material	A	B	C	D
PN-CF16	SS304	19.5	13.5	4	M4
PN -CF35	SS304	39.5	29.5	6	M6
PN -CF63	SS304	50.2	35.2	8	M8

PERFECT VACUUM SOLUTION



*gasket*



Model No.	Material	A	B	C
CG-CF16	Copper	21	16	2
CG -CF35	Copper	48	37	2
CG -CF63	Copper	82	63	2
CG-CF100	Copper	120	101	2
CG-CF150	Copper	171	152	2
CG-CF200	Copper	222	203	2
CG-CF250	Copper	294	269	2

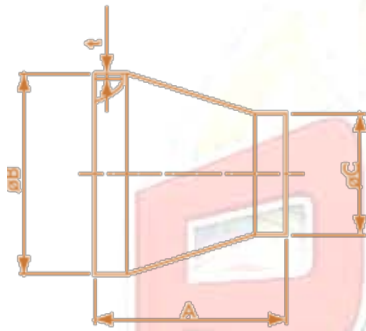
PERFECT VACUUM SOLUTION



PERFECT VACUUM SOLUTION



**Bute weld conical reducer**



Model No.	A	B	C	t
BWCR25-16	35	25.4	19.05	1.5
BWCR40-16	60.3	38.1	19.05	1.65
BWCR40-25	60.3	38.1	25.4	1.65
BWCR50-25	60.3	50.8	25.4	1.65
BWCR50-40	60.3	50.8	38.1	1.65
BWCR63-40	60.3	63.5	38.1	1.65
BWCR63-50	60.3	63.5	50.8	1.65
BWCR80-50	92	76.2	50.8	1.65
BWCR80-63	92	76.2	63.5	1.65
BWCR100-50	92	101.6	50.8	2.5
BWCR100-63	92	101.6	63.5	2.5
BWCR100-80	92	101.6	76.2	2.5
BWCR150-80	152.4	152.4	76.2	3
BWCR150-100	152.4	152.4	101.6	3

**\*\*SS304 available. SS316 or SS316L upon request. L polished inside and outside, G: Glass blasted inside and outside. Ex: BWCR40-16L : 40-16 Bult weld conical reducer polished**

PERFECT VACUUM SOLUTION



PERFECT VACUUM SOLUTION



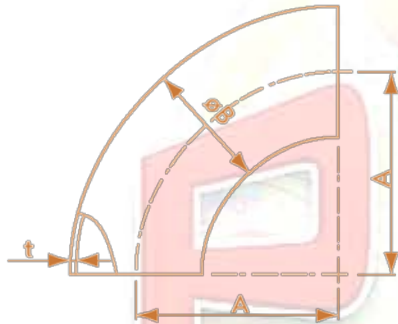
PERFECT VACUUM SOLUTION

**PVS Perfect Vacuum Solution**

info@pvs-vacuum.com



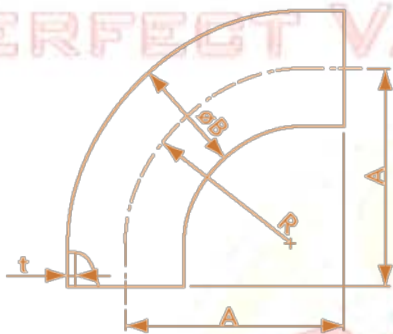
**Bute weld 90deg elbow**



Model No.	Material	A	B	t
BWEL90-16	SS304	28.6	19.05	1.65
BWEL90-25	SS304	38.1	25.4	1.65
BWEL90-40	SS304	57.2	38.1	1.65
BWEL90-50	SS304	76.2	50.8	1.65
BWEL90-63	SS304	95.2	63.5	1.65
BWEL90-80	SS304	114.3	76.2	1.65
BWEL90-100	SS304	152.4	101.6	2
BWEL90-150	SS304	228.6	152.4	2.7

\*\*SS304 available. SS316 or SS316L upon request. L polished inside and outside, G: Glass blasted inside and outside. Ex: BWEL90-16L: 90 deg butt weld elbow polished

**Bute weld 90deg elbow with tangent**

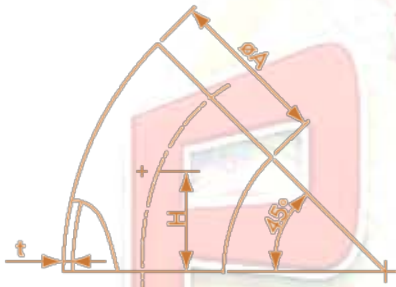


Model No.	Material	A	B	R	t
BWELT90-16	SS304	34.5	19.05	28.6	1.65
BWELT90-25	SS304	52.4	25.4	38.1	1.65
BWELT90-40	SS304	74.6	38.1	57.2	1.65
BWELT90-50	SS304	103.2	50.8	76.2	1.65
BWELT90-63	SS304	131.8	63.5	95.3	1.65
BWELT90-80	SS304	160.3	76.2	114.3	1.65
BWELT90-100	SS304	211.1	101.6	152.4	2

\*\*SS304 available. SS316 or SS316L upon request. L polished inside and outside, G: Glass blasted inside and outside. Ex: BWEL90-16L: 90 deg butt weld elbow polished



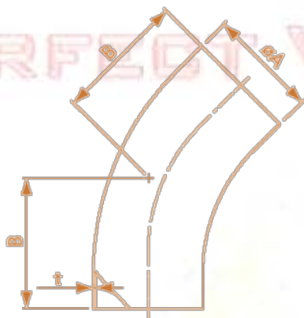
**Bute weld 45deg elbow**



Model No.	Material	A	H	t
BWEL45-16	SS304	19.05	10.8	1.65
BWEL45-25	SS304	25.4	15.9	1.65
BWEL45-40	SS304	38.1	23.8	1.65
BWEL45-50	SS304	50.8	31.8	1.65
BWEL45-63	SS304	63.5	39.7	1.65
BWEL45-80	SS304	76.2	47.6	1.65
BWEL45-100	SS304	101.6	63.5	2

\*\*SS304 available. SS316 or SS316L upon request. L polished inside and outside, G: Glass blasted inside and outside. Ex: BWEL90-16L: 90 deg bult weld elbow polished

**Bute weld 45deg elbow with tangent**

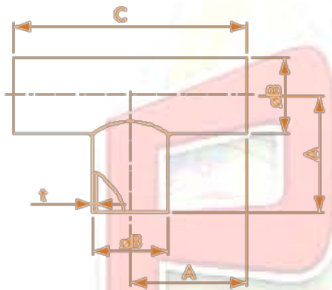


Model No.	Material	A	B	t
BWELT45-16	SS304	19.05	19.3	1.65
BWELT45-25	SS304	25.4	30.2	1.65
BWELT45-40	SS304	38.1	41.3	1.65
BWELT45-50	SS304	50.8	58.7	1.65
BWELT45-63	SS304	63.5	76.2	1.65
BWELT45-80	SS304	76.2	93.7	1.65
BWELT45-100	SS304	101.6	122.2	2

\*\*SS304 available. SS316 or SS316L upon request. L polished inside and outside, G: Glass blasted inside and outside. Ex: BWEL90-16L: 90 deg bult weld elbow polished



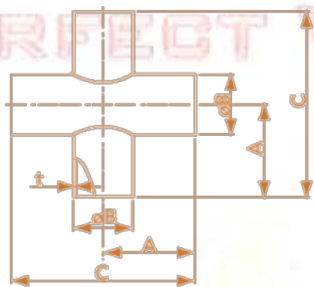
**Bute weld TEE**



Model No.	A	B	C	t
BWTA-16	34.5	19.05	69	1.65
BWTA-25	47.6	25.4	95.2	1.65
BWTA-40	57.2	38.1	114.3	1.65
BWTA-50	76.2	50.8	152.4	1.65
BWTA-63	76.2	63.5	152.4	1.65
BWTA-80	82.5	76.2	165.1	1.65
BWTA-100	98.4	101.6	196.8	2
BWTA-150	127	152.4	254	2.7

\*\*SS304 available. SS316 or SS316L upon request. L polished inside and outside, G: Glass blasted inside and outside. Ex: BWCR40-16L : 40-16 Bult weld conical reducer polished

**Bute weld 4-way cross**



Model No.	A	B	C	t
BW4X-16	34.5	19.05	69	1.65
BW4X-25	47.6	25.4	95.2	1.65
BW4X-40	57.2	38.1	114.3	1.65
BW4X-50	76.2	50.8	152.4	1.65
BW4X-63	76.2	63.5	152.4	1.65
BW4X-80	82.5	76.2	165.1	1.65
BW4X-100	98.4	101.6	196.8	2
BW4X-150	127	152.4	256	2.7

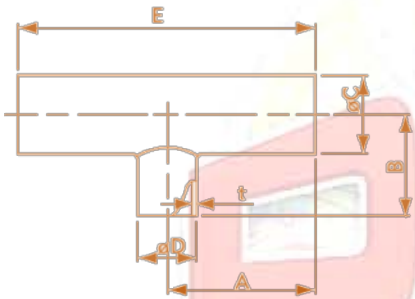
\*\*SS304 available. SS316 or SS316L upon request. L polished inside and outside, G: Glass blasted inside and outside. Ex: BWCR40-16L : 40-16 Bult weld conical reducer polished

\*\* 5-way and 6-way upon request



PERFECT VACUUM SOLUTION

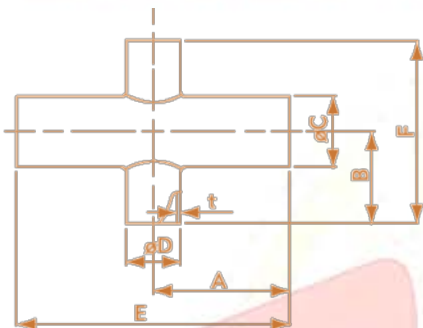
**Bute weld Reducing TEE**



Model No.	A	B	C	D	E	t
BWUTA-25/16	48.2	33.7	25.4	19.05	96.4	1.65
BWUTA-40/16	57.2	48.2	38.1	19.05	114.3	1.65
BWUTA-40/25	57.2	54	38.1	25.4	114.3	1.65
BWUTA-50/16	76.2	54.4	50.8	19.05	152.4	1.65
BWUTA-50/25	76.2	60.3	50.8	25.4	152.4	1.65
BWUTA-50/40	76.2	63.5	50.8	38.1	152.4	1.65
BWUTA-80/63	82.5	82.5	76.2	63.5	165	1.65
BWUTA-100/50	98.4	101.6	101.6	50.8	196.8	2
BWUTA-100/63	98.4	95.3	101.6	63.8	196.8	2
BWUTA-100/80	98.4	95.3	101.6	76.2	196.8	2
BWUTA-150/80	127	120.7	152.4	76.2	254	2.77
BWUTA-150/100	127	123.8	152.4	101.6	254	2.77

\*\*SS304 available. SS316 or SS316L upon request. L polished inside and outside, G: Glass blasted inside and outside. Ex: BWCR40-16L : 40-16 Bult weld conical reducer polished

**Bute weld Reducing 4-way cross**

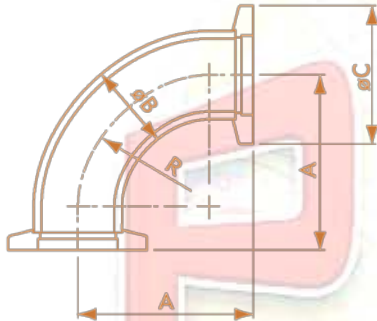


Model No.	A	B	C	D	E	F	t
BWUXA-25/16	48.2	33.7	25.4	19.05	96.4	67.4	1.65
BWUXA-40/16	57.2	48.2	38.1	19.05	114.3	96.4	1.65
BWUXA-40/25	57.2	54	38.1	25.4	114.3	108	1.65
BWUXA-50/16	76.2	54.4	50.8	19.05	152.4	108.8	1.65
BWUXA-50/25	76.2	60.3	50.8	25.4	152.4	120.6	1.65
BWUXA-50/40	76.2	63.5	50.8	38.1	152.4	127	1.65
BWUXA-80/63	82.5	82.5	76.2	63.5	165	165	1.65
BWUXA-100/50	98.4	101.6	101.6	50.8	196.8	203.2	2
BWUXA-100/63	98.4	95.3	101.6	63.8	196.8	190.6	2
BWUXA-100/80	98.4	95.3	101.6	76.2	196.8	190.6	2
BWUXA-150/80	127	120.7	152.4	76.2	254	241.4	2.77
BWUXA-150/100	127	123.8	152.4	101.6	254	247.6	2.77

\*\*SS304 available. SS316 or SS316L upon request. L polished inside and outside, G: Glass blasted inside and outside. Ex: BWCR40-16L : 40-16 Bult weld conical reducer polished



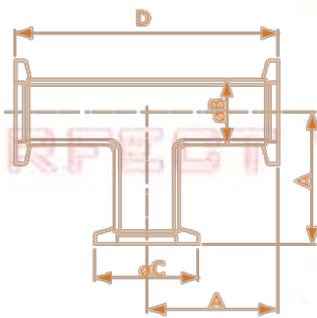
**KF 90 deg elbow**



Model No.	Type	A	B	C	R
KFEL90-16A	USA	38.3	19.05	30	28.6
KFEL90-25A	USA	56.2	25.4	40	38.1
KFEL90-40A	USA	78.4	38.1	55	57.2
KFEL90-50A	USA	107	50.8	75	76.2
KFEL90-16E	EUROPE	40	19.05	30	28.6
KFEL90-25E	EUROPE	50.8	25.4	40	38.1
KFEL90-40E	EUROPE	65	38.1	55	57.2
KFEL90-50E	EUROPE	80	50.8	75	76.2

\*\*SS304 available. SS316 or SS316L upon request. L polished inside and outside, G: Glass blasted inside and outside. Ex: BWEL90-16L: 90 deg butt weld elbow polished

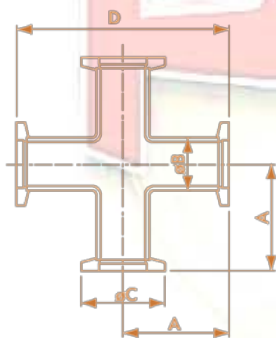
**KF 90 deg elbow**



Model No.	Type	A	B	C	D
KFT-16A	USA	38.3	19.05	30	76.6
KFT-25A	USA	56.2	25.4	40	102.8
KFT-40A	USA	78.4	38.1	55	122
KFT-50A	USA	107	50.8	75	160
KFT-16E	EUROPE	40	19.05	30	80
KFT-25E	EUROPE	50.8	25.4	40	100
KFT-40E	EUROPE	65	38.1	55	130
KFT-50E	EUROPE	80	50.8	75	140

\*\*SS304 available. SS316 or SS316L upon request. L polished inside and outside, G: Glass blasted inside and outside. Ex: BWEL90-16L: 90 deg butt weld elbow polished

**KF 4-WAY CROSS**

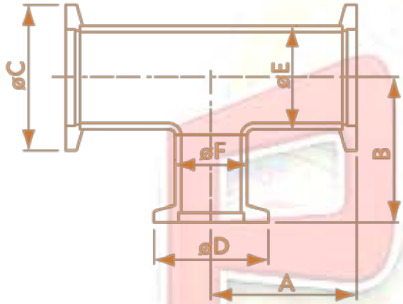


Model No.	Type	A	B	C	D
KFX90-16A	USA	38.3	19.05	30	76.6
KFX90-25A	USA	56.2	25.4	40	102.8
KFX90-40A	USA	78.4	38.1	55	122
KFX90-50A	USA	107	50.8	75	160
KFX90-16E	EUROPE	40	19.05	30	80
KFX90-25E	EUROPE	50.8	25.4	40	100
KFX90-40E	EUROPE	65	38.1	55	130
KFX90-50E	EUROPE	80	50.8	75	140

\*\*SS304 available. SS316 or SS316L upon request. L polished inside and outside, G: Glass blasted inside and outside. Ex: BWEL90-16L: 90 deg butt weld elbow polished



**KF REDUCING TEE**



Model No.	Type	A	B	C	D	E	F
KFUT-25/16A	USA	52	37.5	40	30	25.4	19.05
KFUT-40/16A	USA	61	52	55	30	38.1	19.05
KFUT-40/25A	USA	61	57.8	55	40	38.1	25.4
KFUT-50/16A	USA	80	58.2	75	30	50.8	19.05
KFUT-50/25A	USA	80	64.1	75	40	50.8	25.4
KFUT-50/40A	USA	80	67.3	75	55	50.8	38.1
KFUT-25/16E	EUROPE	50	40	40	30	25.4	19.05
KFUT-40/16E	EUROPE	65	40	55	30	38.1	19.05
KFUT-40/25E	EUROPE	65	50	55	40	38.1	25.4
KFUT-50/16E	EUROPE	70	50	75	30	50.8	19.05
KFUT-50/25E	EUROPE	70	65	75	40	50.8	25.4
KFUT-50/40E	EUROPE	70	65	75	55	50.8	38.1

\*\*SS304 available. SS316 or SS316L upon request. L polished inside and outside, G: Glass blasted inside and outside. Ex: BWEL90-16L: 90 deg butt weld elbow polished

PERFECT VACUUM SOLUTION



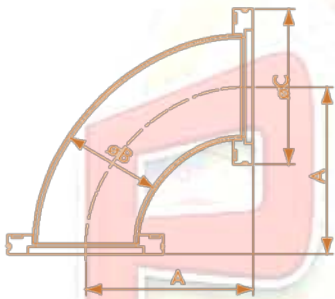
PERFECT VACUUM SOLUTION



**PVS Perfect Vacuum Solution**

info@pvs-vacuum.com

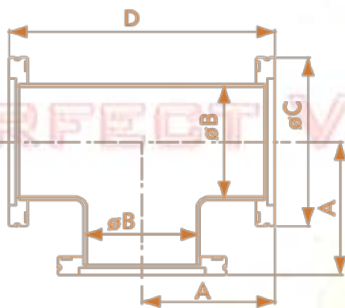
**iso 90 deg elbow**



Model No.	A	B	C
ISOEL90-63A	138.4	63.5	95
ISOEL90-80A	166.9	76.2	110
ISOEL90-100A	217.7	101.6	130
ISOEL90-160A	235.2	152.4	180

\*\*SS304 available. SS316 or SS316L upon request. L polished inside and outside, G: Glass blasted inside and outside. Ex: BWEL90-16L: 90 deg bult weld elbow polished

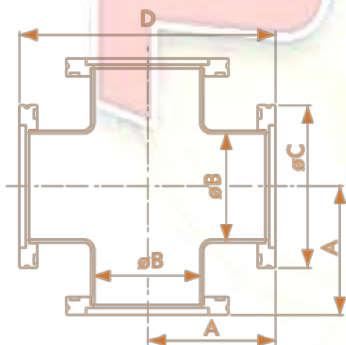
**iso 90 deg elbow**



Model No.	A	B	C	D
ISOT-63A	USA	38.3	19.05	165.6
ISOT-80A	USA	56.2	25.4	178.3
ISOT-100A	USA	78.4	38.1	210
ISOT-160A	USA	107	50.8	267.2

\*\*SS304 available. SS316 or SS316L upon request. L polished inside and outside, G: Glass blasted inside and outside. Ex: BWEL90-16L: 90 deg bult weld elbow polished

**Iso 4-WAY CROSS**

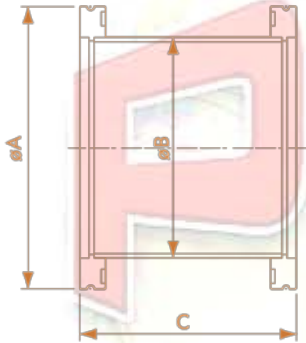


Model No.	A	B	C	D
ISOX-63A	USA	38.3	19.05	165.6
ISOX-80A	USA	56.2	25.4	178.3
ISOX-100A	USA	78.4	38.1	210
ISOX-160A	USA	107	50.8	267.2

\*\*SS304 available. SS316 or SS316L upon request. L polished inside and outside, G: Glass blasted inside and outside. Ex: BWEL90-16L: 90 deg bult weld elbow polished



**iso FULL NIPPLE**



Model No.	A	B	C
ISOFN-63	95	63.5	100
ISOFN-80	110	76.2	100
ISOFN-100	130	101.6	100
ISOFN-160	180	152.4	100
ISOFN-200	240	203.2	100
ISOFN-250	290	254	100
ISOFN-320	370	304.8	200
ISOFN-400	450	406.4	200
ISOFN-500	550	508	200

\*\*SS304 available. SS316 or SS316L upon request. L polished inside and outside, G: Glass blasted inside and outside. Ex: BWEL90-16L: 90 deg built weld elbow polished

\*\* Customized length is acceptable

PERFECT VACUUM SOLUTION



PERFECT VACUUM SOLUTION



PERFECT VACUUM SOLUTION

**PVS Perfect Vacuum Solution**

info@pvs-vacuum.com



**cF full Nipple**



Nonrotatable	A	B	C	One Flange Rotatable
FN-CF16	33.8	76	19.05	FN-CR16
FN-CF35	69.5	126	38.1	FN-CR35
FN-CF63	113.6	210	63.5	FN-CR63
FN-CF100	151.6	270	101.6	FN-CR100
FN-CF150	202.5	334	152.4	FN-CR150
FN-CF200	253.2	334	203.2	FN-CR200

\*\*SS304 available, SS316 or customized length upon request

PERFECT VACUUM SOLUTION

**cF 90 deg elbow**



Nonrotatable	A	B	C	One flange Rotatable
CFEL90-16A	37.5	19.05	33.8	CREL90-16A
CFEL90-35A	79.9	38.1	69.5	CREL90-35A
CFEL90-63A	141.3	63.5	113.6	CREL90-63A
CFEL90-100A	222.2	101.6	151.6	CREL90-100A
CFEL90-150A	241.3	152.4	202.5	CREL90-150A

PERFECT VACUUM SOLUTION



PERFECT VACUUM SOLUTION

**PVS Perfect Vacuum Solution**

info@pvs-vacuum.com

**cF Tee**



Nonrotatable	A	B	C	D	Two Flanges Rotatable
CFT-16A	37.5	19.05	33.8	75	CRT-16A
CFT-35A	79.9	38.1	69.5	125	CRT-35A
CFT-63A	141.3	63.5	113.6	171/4	CRT-63A
CFT-100A	222.2	101.6	151.6	219	CRT-100A
CFT-150A	241.3	152.4	202.5	279.4	CRT-150A

\*\*SS304 available, SS316 or customized length upon request

PERFECT VACUUM SOLUTION

**cF 4-way cross**



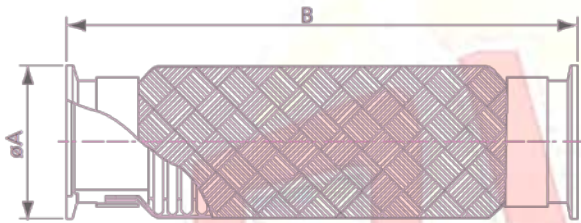
Nonrotatable	A	B	C	D	Two Flanges Rotatable
CFX-16A	37.5	19.05	33.8	75	CRX-16A
CFX-35A	62/5	38.1	69.5	125	CRX-35A
CFX-63A	85.7	63.5	113.6	171/4	CRX-63A
CFX-100A	109.5	101.6	151.6	219	CRX-100A
CFX-150A	139.7	152.4	202.5	279.4	CRX-150A

\*\*SS304 available, SS316 or customized length upon request

PERFECT VACUUM SOLUTION



**BRAIDED Flexible hose**

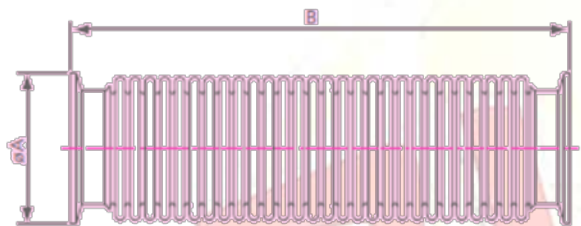


Model No.	Material	A	B
BFXKF16-250	SS304	30	250
BFXKF16-500	SS304	30	500
BFXKF16-750	SS304	30	750
BFXKF25-1000	SS304	30	1000
BFXKF25-250	SS304	40	250
BFXKF25-500	SS304	40	500
BFXKF25-750	SS304	40	750
BFXKF25-1000	SS304	40	1000
BFXKF40-250	SS304	55	250
BFXKF40-500	SS304	55	500
BFXKF40-750	SS304	55	750
BFXKF40-1000	SS304	55	1000
BFXKF50-250	SS304	75	250
BFXKF50-500	SS304	75	500
BFXKF50-750	SS304	75	750
BFXKF50-1000	SS304	75	1000
BFXISO63-1000	SS304	95	1000
BFXCF63-1000	SS304	113.6	1000

**\*\*Customized length is acceptable upon request. KF series longest length 2000mm, ISO AND CF series longest length 1000mm.**

PERFECT VACUUM SOLUTION

**kf Flexible hose**



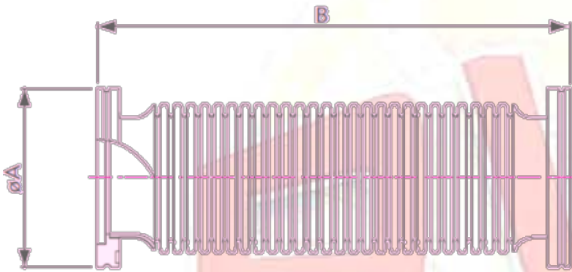
Model No.	Material	A	B
FXXKF16-250	SS304	30	250
FXXKF16-500	SS304	30	500
FXXKF16-750	SS304	30	750
FXXKF25-1000	SS304	30	1000
FXXKF25-250	SS304	40	250
FXXKF25-500	SS304	40	500
FXXKF25-750	SS304	40	750
FXXKF25-1000	SS304	40	1000
FXXKF40-250	SS304	55	250
FXXKF40-500	SS304	55	500
FXXKF40-750	SS304	55	750
FXXKF40-1000	SS304	55	1000
FXXKF50-250	SS304	75	250
FXXKF50-500	SS304	75	500
FXXKF50-750	SS304	75	750
FXXKF50-1000	SS304	75	1000

**\*\*Customized length is acceptable upon request. KF series longest length 3000mm.**

PERFECT VACUUM SOLUTION



*iso Flexible hose*



Model No.	Material	A	B
FXISO63-250	SS304	95	250
FXISO63-500	SS304	95	500
FXISO63-750	SS304	95	750
FXISO63-1000	SS304	95	1000
FXISO63-3000	SS304	95	3000
FXISO80-250	SS304	110	250
FXISO80-500	SS304	110	500
FXISO80-750	SS304	110	750
FXISO80-1000	SS304	110	1000
FXISO80-3000	SS304	110	3000
FXISO100-250	SS304	130	250
FXISO100-500	SS304	130	500
FXISO100-750	SS304	130	750
FXISO100-1000	SS304	130	1000
FXISO100-1500	SS304	130	1500
FXISO160-250	SS304	180	250
FXISO160-500	SS304	180	500
FXISO160-750	SS304	180	750
FXISO160-1000	SS304	180	1000
FXISO160-2000	SS304	180	2000
FXISO200-250	SS304	240	250
FXISO250-200	SS304	290	200
FXISO320-200	SS304	370	200

\*\*Customized length is acceptable upon request..

PERFECT VACUUM SOLUTION

PVVS

PERFECT VACUUM SOLUTION

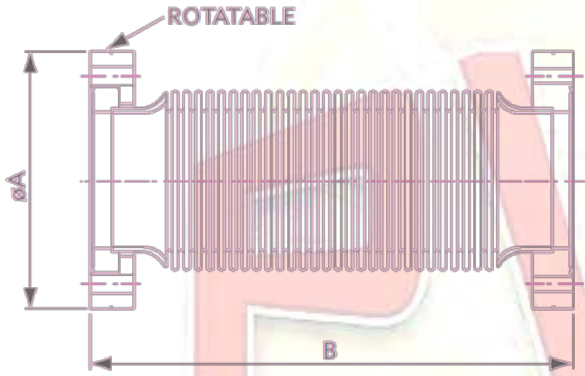


PERFECT VACUUM SOLUTION

**PVS Perfect Vacuum Solution**

info@pvs-vacuum.com

cf Flexible hose



Model No.	Material	A	B
FXCF16-250	SS304	33.8	250
FXCF16-500	SS304	33.8	500
FXCF16-750	SS304	33.8	700
FXCF16-1000	SS304	33.8	1000
FXCF35-250	SS304	69.5	250
FXCF35-500	SS304	69.5	500
FXCF35-750	SS304	69.5	700
FXCF35-1000	SS304	69.5	1000
FXCF35-3000	SS304	69.5	3000
FXCF63-250	SS304	95	250
FXCF63-500	SS304	95	500
FXCF63-750	SS304	95	750
FXCF63-1000	SS304	95	1000
FXCF100-250	SS304	130	250
FXCF100-500	SS304	130	500
FXCF100-750	SS304	130	750
FXCF100-1000	SS304	130	1000
FXCF100-1500	SS304	130	1500
FXCF160-250	SS304	180	250
FXCF160-500	SS304	180	500
FXCF160-750	SS304	180	750
FXCF160-1000	SS304	180	1000
FXCF160-2000	SS304	180	2000
FXCF200-250	SS304	240	250
FXCF250-200	SS304	290	200
FXCF320-200	SS304	370	200

\*\*Customized length is acceptable upon request..

PERFECT VACUUM SOLUTION

PVVS

PERFECT VACUUM SOLUTION

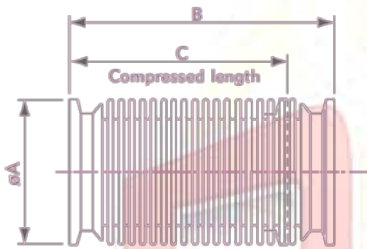


PERFECT VACUUM SOLUTION

**PVS Perfect Vacuum Solution**

info@pvs-vacuum.com

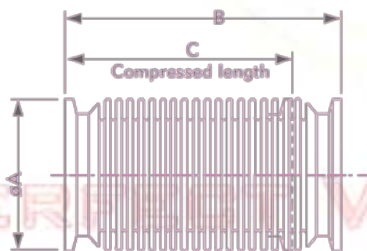
**KF Compressible Bellows**



\*\*Customized length is acceptable upon request..

Model No.	Material	A	B	C
FXCKF10-100	SS304	30	100	80
FXCKF16-100	SS304	30	100	80
FXCKF25-100	SS304	40	100	80
FXCKF40-100	SS304	55	100	80
FXCKF50-100	SS304	75	100	80

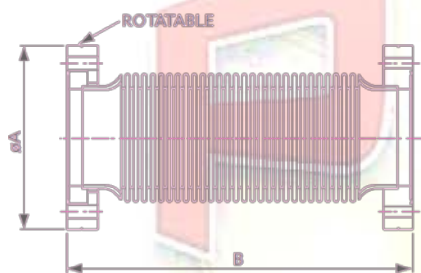
**Iso Compressible Bellows**



\*\*Customized length is acceptable upon request..

Model No.	Material	A	B	C
FXCISO63-140	SS304	95	140	125
FXCISO80-187	SS304	110	187	160
FXCISO100-187	SS304	130	187	160

**Cf Compressible Bellows**

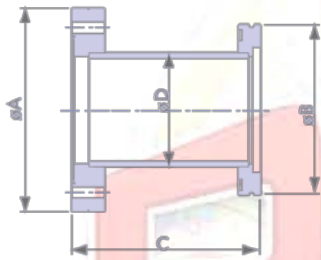


\*\*Customized length is acceptable upon request..

Model No.	Material	A	B	C
FXCCF10-150	SS304	33.8	150	130
FXCCF35-180	SS304	69.5	180	160
FXCCF63-210	SS304	113.6	210	190
FXCCF100-270	SS304	151.6	270	250



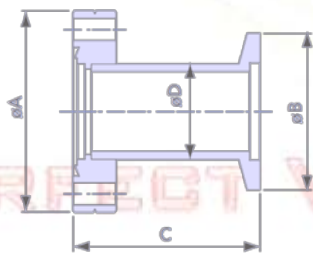
**Cf/iso nipple adaptor**



\*\*SS304 available. Customized length is acceptable upon request.

Model No.	A	B	C	D
NA-CF63/ISO63	113.6	95	90	63.5
NA-CF100/ISO63	151.6	95	90	63.5
NA-CF100/ISO100	151.6	130	90	101.6
NA-ISO160/CF100	151.6	180	90	101.6
NA-CF150/ISO63	202.5	95	90	63.5
NA-CF150/ISO100	202.5	130	90	101.6
NA-ISO160/CF150	202.5	180	90	152.4

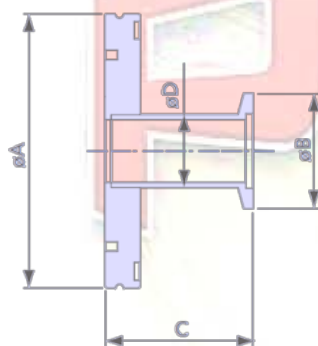
**Cf/kf nipple adaptor**



\*\*SS304 available. Customized length is acceptable upon request.

Model No.	A	B	C	D
NA-CF16/KF10	33.8	30	43	12.7
NA-CF16/KF16	33.8	30	43	19.05
NA-CF35/KF10	69.5	30	45.3	12.7
NA-CF35/KF16	69.5	30	45.3	19.05
NA-CF35/KF25	69.5	40	45.3	25.4
NA-CF35/KF40	69.5	55	45.3	38.1
NA-CF63/KF50	113.6	75	49.5	50.8

**ISO/kf nipple adaptor**

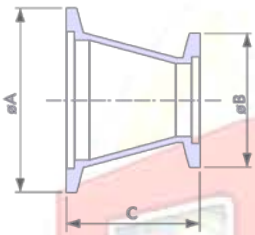


\*\*SS304 available. Customized length is acceptable upon request.

Model No.	A	B	C	D
NA-ISO63/KF25	95	40	44	25.4
NA-ISO63/KF40	95	55	44	38.1
NA-ISO63/KF50	95	75	44	50.8
NA-ISO80/KF40	110	55	44	38.1
NA-ISO80/KF50	110	75	44	50.8
NA-ISO100/KF40	130	55	44	38.1
NA-ISO100/KF50	130	75	44	50.8



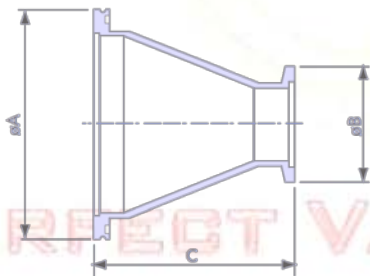
**Kf/kf Conical reducer**



\*\*SS316 & SS316L upon request

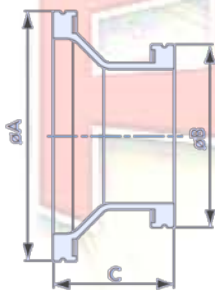
Model No.	Material	A	B	C
CR-KF25/16	SS304	40	30	40
CR-KF40/16	SS304	55	30	40
CR-KF40/25	SS304	55	40	40
CR-KF50/16	SS304	75	30	40
CR-KF50/25	SS304	75	40	40
CR-KF50/40	SS304	75	55	40

**Iso/kf conical reducer**



Model No.	Material	A	B	C
CR-ISO63/KF25	SS304	90	40	63
CR-ISO63/KF40	SS304	90	55	63
CR-ISO63/KF50	SS304	90	75	63
CR-ISO80/KF25	SS304	110	40	63
CR-ISO80/KF40	SS304	110	55	63
CR-ISO80/KF50	SS304	110	75	63
CR-ISO100/KF40	SS304	130	55	63
CR-ISO100/KF50	SS304	130	75	63

**ISO/ISO nipple adaptor**



Model No.	Material	A	B	C
NA-ISO80/63	SS304	110	95	63
NA-ISO100/63	SS304	130	95	63
NA-ISO100/80	SS304	130	110	63
NA-ISO160/63	SS304	180	95	63
NA-ISO160/80	SS304	180	110	63
NA-ISO160/100	SS304	180	130	63



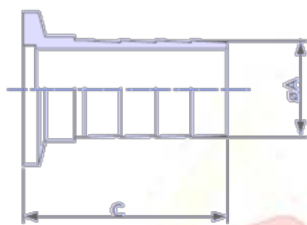


**Cf(cr) Nipple Adaptor**



Nonrotatable	A	B	C	D	One flange Rotatable
NA-CF35/16	69.5	33.8	76.2	19.05	NA-CF35/CR16
NA-CF63/16	113.6	33.8	76.2	19.05	NA-CF63/CR16
NA-CF63/35	113.6	69.5	76.2	38.1	NA-CF63/CR35
NA-CF100/35	151.6	69.5	76.2	38.1	NA-CF100/CR35
NA-CF100/63	151.6	113.6	76.2	63.5	NA-CF100/CR63
NA-CF150/35	202.5	69.5	76.2	38.1	NA-CF150/CR35
NA-CF150/63	202.5	113.6	76.2	63.5	NA-CF150/CR63
NA-CF150/100	202.5	151.6	76.2	101.6	NA-CF150/CR100

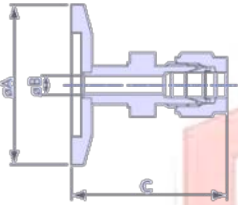
**PERFECT VACUUM SOLUTION**  
**KF Rubber Hose adaptor**



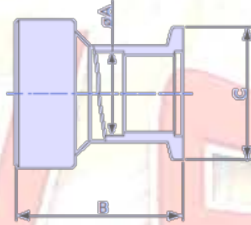
Model No.	Material	A	B
RHA-KF16	SS304	19.1	40
RHA-KF25	SS304	22.2	40
RHA-KF40	SS304	41.3	40
RHA-KF50	SS304	47.4	40



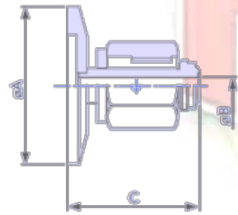
**Fitting to Flange**



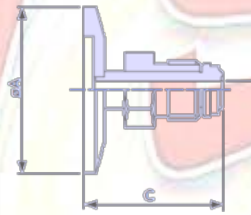
**KF-Swagelok adaptor**



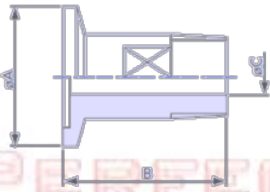
**KF Quick Disconnect Adaptor**



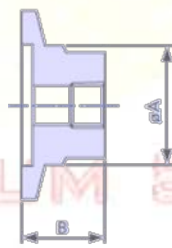
**KF-VCR Female Adaptor**



**KFVCR Male Adaptor**



**KF Male Pipe Adaptor**



**KF Female Pipe Adaptor**

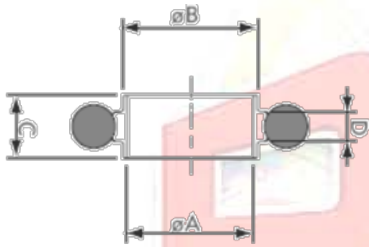
PERFECT VACUUM SOLUTION

PVVS

PERFECT VACUUM SOLUTION



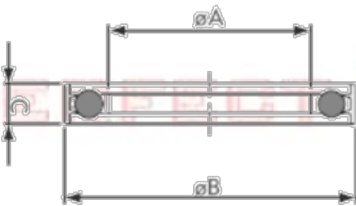
### KF Centering Ring with O/ring



Model No.	O'ring Material	A	B	C	D
CRV-KF10	Viton	10	12	8	3.9
CRV-KF16	Viton	16	17	8	3.9
CRV-KF25	Viton	25	26	8	3.9
CRV-KF40	Viton	40	41	8	3.9
CRV-KF50	Viton	50	52	8	3.9
CRN-KF10	NBR	10	12	8	3.9
CRN-KF16	NBR	16	17	8	3.9
CRN-KF25	NBR	25	26	8	3.9
CRN-KF40	NBR	40	41	8	3.9
CRN-KF50	NBR	50	52	8	3.9

\*\*Centering SS304, SS316, Aluminum is upon request

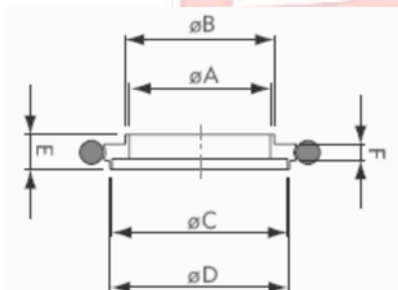
### KF Centering Ring with O/ring AND OUTER RING



Model No.	O'ring Material	Outer Ring	A	B	C
CRVO-KF16	Viton	Alu	16	32.5	8
CRVO-KF25	Viton	Alu	25	42.5	8
CRVO-KF40	Viton	Alu	40	57.5	8
CRVO-KF50	Viton	Alu	50	77.5	8
CRNO-KF16	NBR	Alu	16	32.5	8
CRNO-KF25	NBR	Alu	25	42.5	8
CRNO-KF40	NBR	Alu	40	57.5	8
CRNO-KF50	NBR	Alu	50	77.5	8

\*\* Centering SS304, SS316, Aluminum is upon request

### KF Reducing Centering Ring with O/ring

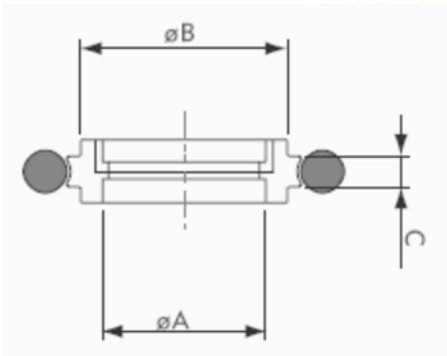


Model No.	O'ring Material	A	B	C	D	E	F
CRV-KF10/16	Viton	10	12	16	17	8	3.9
CRV-KF20/25	Viton	20	22	25	26	8	3.9
CRV-KF32/40	Viton	32	34	40	41	8	3.9
CRN-KF10/16	NBR	10	12	16	17	8	3.9
CRN-KF20/25	NBR	20	22	25	26	8	3.9
CRN-KF32/40	NBR	32	34	40	41	8	3.9

\*\* Centering SS304, Outer Ring Aluminum. SS316, Aluminum is upon request



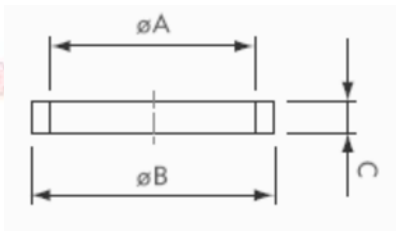
### KF Meshed Centering Ring with O/ring



\*\*Centering SS304.NBR O/ring is available.

Model No.	O'ring Material	A	B	C
CRMV-KF16	Viton	9.5	17	3.9
CRMV-KF25	Viton	19	26	3.9
CRMV-KF40	Viton	32	41	3.9
CRMV-KF50	Viton	43	52	3.9
CRMV-KF63	Viton	60.6	69.6	3.9
CRMV-KF80	Viton	73.6	82.6	3.9
CRMV-KF100	Viton	89.6	101.6	3.9
CRMV-KF160	Viton	140.6	152.6	3.9

### KF Over pressure ring



Model No.	Material	A	B	C
OPR-KF16	SS304	23.5	28	3.7
OPR-KF25	SS304	30.12	31.75	3.7
OPR-KF40	SS304	38.16	40.4	3.7
OPR-KF50	SS304	54	57.15	3.7
OPR-KF63	SS304	66.55	69.85	3.7
OPR-KF80	SS304	100.2	106	3.9
OPR-KF100	SS304	119.3	125.3	3.9
OPR-KF160	SS304	170.4	176.4	3.9



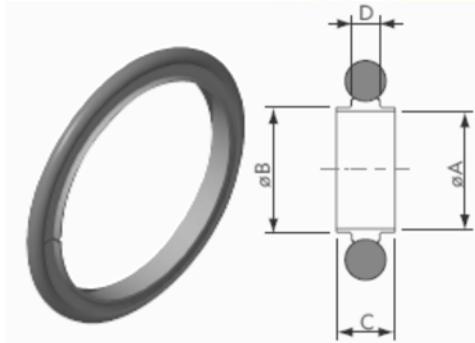
PERFECT VACUUM SOLUTION

PERFECT VACUUM SOLUTION

**PVS Perfect Vacuum Solution**

info@pvs-vacuum.com

## iso Centering Ring with O/ring



\*\*EUROPE TYPE

\*\* Centering with notch

Model No.	Center Ring Material	O'ring Material	A	B	C	D
CRVSE-ISO63	SS304	Viton	68	70	8	3.9
CRVSE-ISO80	SS304	Viton	81	82.6	8	3.9
CRVSE-ISO100	SS304	Viton	100	102	8	3.9
CRVSE-ISO160	SS304	Viton	148	153	8	3.9
CRVSE-ISO200	SS304	Viton	210	213	8	3.9
CRVSE-ISO250	SS304	Viton	257.5	261	8	3.9
CRVSE-ISO320	SS304	Viton	312	318	12	5.6
CRVSE-ISO400	SS304	Viton	394	400	12	5.6
CRVSE-ISO500	SS304	Viton	494	501	12	5.6
CRNSE-ISO63	SS304	NBR	68	70	8	3.9
CRNSE-ISO80	SS304	NBR	81	82.6	8	3.9
CRNSE-ISO100	SS304	NBR	100	102	8	3.9
CRNSE-ISO160	SS304	NBR	148	153	8	3.9
CRNSE-ISO200	SS304	NBR	210	213	8	3.9
CRNSE-ISO250	SS304	NBR	257.5	261	8	3.9
CRNSE-ISO320	SS304	NBR	312	318	12	5.6
CRNSE-ISO400	SS304	NBR	394	400	12	5.6
CRNSE-ISO500	SS304	NBR	494	501	12	5.6
CRVAE-ISO63	Alu	Viton	68	70	8	3.9
CRVAE-ISO80	Alu	Viton	81	82.6	8	3.9
CRVAE-ISO100	Alu	Viton	100	102	8	3.9
CRVAE-ISO160	Alu	Viton	148	153	8	3.9
CRVAE-ISO200	Alu	Viton	210	213	8	3.9
CRVAE-ISO250	Alu	Viton	257.5	261	8	3.9
CRVAE-ISO320	Alu	Viton	312	318	12	5.6
CRVAE-ISO400	Alu	Viton	394	400	12	5.6
CRVAE-ISO500	Alu	Viton	494	501	12	5.6
CRNAE-ISO63	Alu	NBR	68	70	8	3.9
CRNAE-ISO80	Alu	NBR	81	82.6	8	3.9
CRNAE-ISO100	Alu	NBR	100	102	8	3.9
CRNAE-ISO160	Alu	NBR	148	153	8	3.9
CRNAE-ISO200	Alu	NBR	210	213	8	3.9
CRNAE-ISO250	Alu	NBR	257.5	261	8	3.9
CRNAE-ISO320	Alu	NBR	312	318	12	5.6
CRNAE-ISO400	Alu	NBR	394	400	12	5.6
CRNAE-ISO500	Alu	NBR	494	501	12	5.6



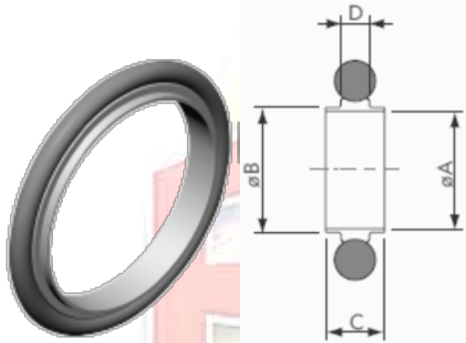
PERFECT VACUUM SOLUTION

PERFECT VACUUM SOLUTION

**PVS Perfect Vacuum Solution**

info@pvs-vacuum.com

iso Centering Ring with O/ring



\*\*USA TYPE  
\*\* Centering without notch

Model No.	Center Ring Material	O'ring Material	A	B	C	D
CRVS-ISO63	SS304	Viton	67	69.6	8	3.9
CRVS-ISO80	SS304	Viton	80	82.6	8	3.9
CRVS-ISO100	SS304	Viton	100	101.6	8	3.9
CRVS-ISO160	SS304	Viton	150	152.6	8	3.9
CRVS-ISO200	SS304	Viton	210	212.6	8	3.9
CRVS-ISO250	SS304	Viton	257.5	260.4	8	3.9
CRVS-ISO320	SS304	Viton	312	317.3	12	5.6
CRVS-ISO400	SS304	Viton	394	399.2	12	5.6
CRVS-ISO500	SS304	Viton	494	500.2	12	5.6
CRNS-ISO63	SS304	NBR	67	69.6	8	3.9
CRNS-ISO80	SS304	NBR	80	82.6	8	3.9
CRNS-ISO100	SS304	NBR	100	101.6	8	3.9
CRNS-ISO160	SS304	NBR	150	152.6	8	3.9
CRNS-ISO200	SS304	NBR	210	212.6	8	3.9
CRNS-ISO250	SS304	NBR	257.5	260.4	8	3.9
CRNS-ISO320	SS304	NBR	312	317.3	12	5.6
CRNS-ISO400	SS304	NBR	394	399.2	12	5.6
CRNS-ISO500	SS304	NBR	494	500.2	12	5.6
CRVA-ISO63	Alu	Viton	67	69.6	8	3.9
CRVA-ISO80	Alu	Viton	80	82.6	8	3.9
CRVA-ISO100	Alu	Viton	100	101.6	8	3.9
CRVA-ISO160	Alu	Viton	150	152.6	8	3.9
CRVA-ISO200	Alu	Viton	210	212.6	8	3.9
CRVA-ISO250	Alu	Viton	257.5	260.4	8	3.9
CRVA-ISO320	Alu	Viton	312	317.3	12	5.6
CRVA-ISO400	Alu	Viton	394	399.2	12	5.6
CRVA-ISO500	Alu	Viton	494	500.2	12	5.6
CRNA-ISO63	Alu	NBR	67	69.6	8	3.9
CRNA-ISO80	Alu	NBR	80	82.6	8	3.9
CRNA-ISO100	Alu	NBR	100	101.6	8	3.9
CRNA-ISO160	Alu	NBR	150	152.6	8	3.9
CRNA-ISO200	Alu	NBR	210	212.6	8	3.9
CRNA-ISO250	Alu	NBR	257.5	260.4	8	3.9
CRNA-ISO320	Alu	NBR	312	317.3	12	5.6
CRNA-ISO400	Alu	NBR	394	399.2	12	5.6
CRNA-ISO500	Alu	NBR	494	500.2	12	5.6

PERFECT VACUUM SOLUTION



PERFECT VACUUM SOLUTION

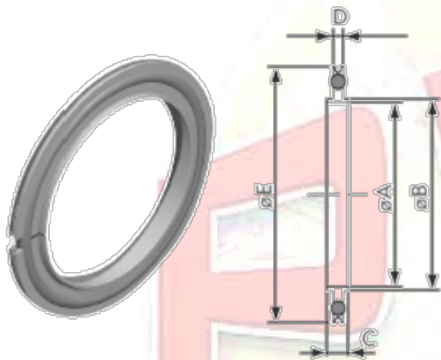


PERFECT VACUUM SOLUTION

**PVS Perfect Vacuum Solution**

info@pvs-vacuum.com

### iso Centering Ring with O/ring and outer Ring



\*\*EUROPE TYPE

\*\* Centering with notch

Model No.	C'Ring Material	O'ring Material	A	B	C	D	E
OCRVSE-ISO63	SS304	Viton	68	70	8	3.9	94
OCRVSE-ISO80	SS304	Viton	81	82.6	8	3.9	109
OCRVSE-ISO100	SS304	Viton	100	102	8	3.9	128
OCRVSE-ISO160	SS304	Viton	148	153	8	3.9	179
OCRVSE-ISO200	SS304	Viton	210	213	8	3.9	238
OCRVSE-ISO250	SS304	Viton	257.5	261	8	3.9	287
OCRVSE-ISO320	SS304	Viton	312	318	12	5.6	344
OCRVSE-ISO400	SS304	Viton	394	400	12	5.6	446
OCRVSE-ISO500	SS304	Viton	494	501	12	5.6	535
OCRNSE-ISO63	SS304	NBR	68	70	8	3.9	94
OCRNSE-ISO80	SS304	NBR	81	82.6	8	3.9	109
OCRNSE-ISO100	SS304	NBR	100	102	8	3.9	128
OCRNSE-ISO160	SS304	NBR	148	153	8	3.9	179
OCRNSE-ISO200	SS304	NBR	210	213	8	3.9	238
OCRNSE-ISO250	SS304	NBR	257.5	261	8	3.9	287
OCRNSE-ISO320	SS304	NBR	312	318	12	5.6	344
OCRNSE-ISO400	SS304	NBR	394	400	12	5.6	446
OCRNSE-ISO500	SS304	NBR	494	501	12	5.6	535
OCRVAE-ISO63	Alu	Viton	68	70	8	3.9	94
OCRVAE-ISO80	Alu	Viton	81	82.6	8	3.9	109
OCRVAE-ISO100	Alu	Viton	100	102	8	3.9	128
OCRVAE-ISO160	Alu	Viton	148	153	8	3.9	179
OCRVAE-ISO200	Alu	Viton	210	213	8	3.9	238
OCRVAE-ISO250	Alu	Viton	257.5	261	8	3.9	287
OCRVAE-ISO320	Alu	Viton	312	318	12	5.6	344
OCRVAE-ISO400	Alu	Viton	394	400	12	5.6	446
OCRVAE-ISO500	Alu	Viton	494	501	12	5.6	535
OCRNAE-ISO63	Alu	NBR	68	70	8	3.9	94
OCRNAE-ISO80	Alu	NBR	81	82.6	8	3.9	109
OCRNAE-ISO100	Alu	NBR	100	102	8	3.9	128
OCRNAE-ISO160	Alu	NBR	148	153	8	3.9	179
OCRNAE-ISO200	Alu	NBR	210	213	8	3.9	238
OCRNAE-ISO250	Alu	NBR	257.5	261	8	3.9	287
OCRNAE-ISO320	Alu	NBR	312	318	12	5.6	344
OCRNAE-ISO400	Alu	NBR	394	400	12	5.6	446
OCRNAE-ISO500	Alu	NBR	494	501	12	5.6	535



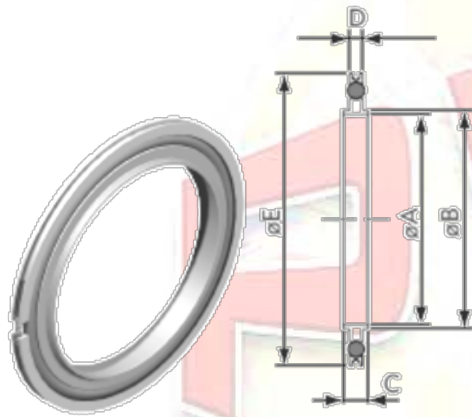
PERFECT VACUUM SOLUTION

PERFECT VACUUM SOLUTION

**PVS Perfect Vacuum Solution**

info@pvs-vacuum.com

### iso Centering Ring with O/ring and outer Ring



\*\*USA TYPE

\*\* Centering without notch

Model No.	C'Ring Material	O'ring Material	A	B	C	D	E
CRVS-ISO63	SS304	Viton	67	69.6	8	3.9	94
CRVS-ISO80	SS304	Viton	80	82.6	8	3.9	109
CRVS-ISO100	SS304	Viton	100	101.6	8	3.9	128
CRVS-ISO160	SS304	Viton	150	152.6	8	3.9	179
CRVS-ISO200	SS304	Viton	210	212.6	8	3.9	238
CRVS-ISO250	SS304	Viton	257.5	260.4	8	3.9	287
CRVS-ISO320	SS304	Viton	312	317.3	12	5.6	344
CRVS-ISO400	SS304	Viton	394	399.2	12	5.6	446
CRVS-ISO500	SS304	Viton	494	500.2	12	5.6	535
CRNS-ISO63	SS304	NBR	67	69.6	8	3.9	94
CRNS-ISO80	SS304	NBR	80	82.6	8	3.9	109
CRNS-ISO100	SS304	NBR	100	101.6	8	3.9	128
CRNS-ISO160	SS304	NBR	150	152.6	8	3.9	179
CRNS-ISO200	SS304	NBR	210	212.6	8	3.9	238
CRNS-ISO250	SS304	NBR	257.5	260.4	8	3.9	287
CRNS-ISO320	SS304	NBR	312	317.3	12	5.6	344
CRNS-ISO400	SS304	NBR	394	399.2	12	5.6	446
CRNS-ISO500	SS304	NBR	494	500.2	12	5.6	535
CRVA-ISO63	Alu	Viton	67	69.6	8	3.9	94
CRVA-ISO80	Alu	Viton	80	82.6	8	3.9	109
CRVA-ISO100	Alu	Viton	100	101.6	8	3.9	128
CRVA-ISO160	Alu	Viton	150	152.6	8	3.9	179
CRVA-ISO200	Alu	Viton	210	212.6	8	3.9	238
CRVA-ISO250	Alu	Viton	257.5	260.4	8	3.9	287
CRVA-ISO320	Alu	Viton	312	317.3	12	5.6	344
CRVA-ISO400	Alu	Viton	394	399.2	12	5.6	446
CRVA-ISO500	Alu	Viton	494	500.2	12	5.6	535
CRNA-ISO63	Alu	NBR	67	69.6	8	3.9	94
CRNA-ISO80	Alu	NBR	80	82.6	8	3.9	109
CRNA-ISO100	Alu	NBR	100	101.6	8	3.9	128
CRNA-ISO160	Alu	NBR	150	152.6	8	3.9	179
CRNA-ISO200	Alu	NBR	210	212.6	8	3.9	238
CRNA-ISO250	Alu	NBR	257.5	260.4	8	3.9	287
CRNA-ISO320	Alu	NBR	312	317.3	12	5.6	344
CRNA-ISO400	Alu	NBR	394	399.2	12	5.6	446
CRNA-ISO500	Alu	NBR	494	500.2	12	5.6	535



PERFECT VACUUM SOLUTION

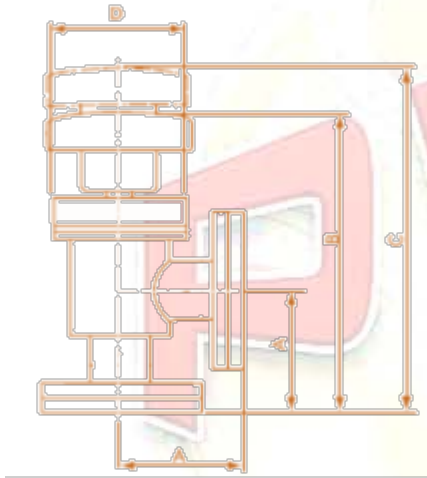
PERFECT VACUUM SOLUTION

**PVS Perfect Vacuum Solution**

info@pvs-vacuum.com



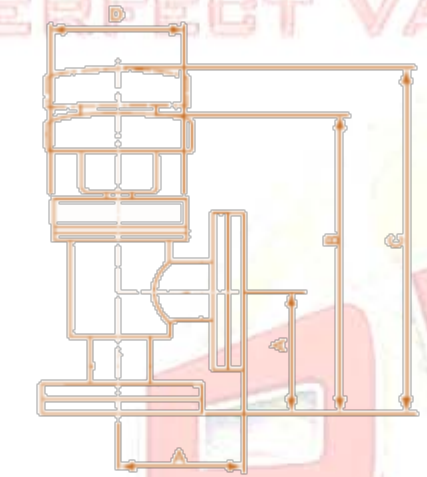
**Angle valve Manual with Bellow (usa)**



\*\*Dimensions are in inch

Model No.	A	B	C	D
MAV-KF16A	2.15	5.41	6.15	2.24
MAV-KF25A	2.03	5.13	5.89	2.24
MAV-KF40A	2.40	6.20	7.48	2.94
MAV-KF50A	3.40	8.15	9.91	3.48
MAV-CR16A	2.50	5.70	6.50	2.24
MAV-CR35A	2.46	6.50	7.78	2.98
MAV-CR63A	3.37	8.75	10.42	3.48
MAV-ISO63A	2.27	8.63	10.30	3.48
MAV-ISO80A	3.51	8.95	10.83	4.49
MAV-ISO100A	4.47	11.19	15.13	5.97
MAV-ISO160A	6.26	14.09	17.03	9.45

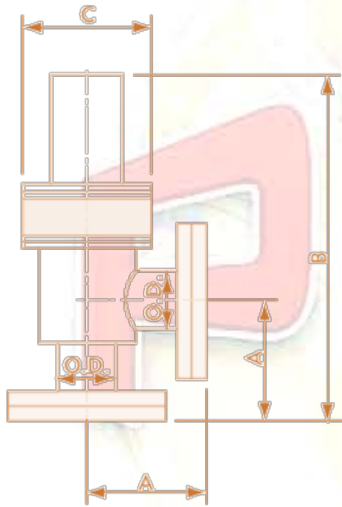
**Angle valve Manual with Bellow (EUOPE)**



Model No.	A	B	C	D
MAV-KF16E	40	121.9	141.5	56.8
MAV-KF25E	50	128.6	148.1	56.8
MAV-KF40E	65	167.5.5	200	75.8
MAV-KF50E	70	190.5	235.5	88.4
MAV-CR16E	38	119.9	139.5	56.8
MAV-CR35E	63	165.5	198.0	75.8
MAV-CR63E	105	241.5	283.9	151.6
MAV-ISO63E	88	224.5	266.9	151.6
MAV-ISO80E	98	236.3	283.9	114
MAV-ISO100E	108	278.8	342.7	151.6
MAV-ISO160E	169	363.5	448	240



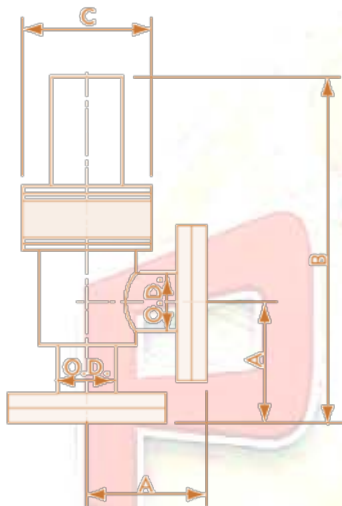
**Angle valve Pneumatically with Bellow (usa)**



Model No.	A	B	C
PAV-KF16A	2.15	5.41	2.24
PAV-KF25A	2.03	5.13	2.24
PAV-KF40A	2.40	6.20	2.98
PAV-KF50A	3.40	8.15	3.48
PAV-CR16A	2.50	5.70	2.24
PAV-CR35A	2.46	6.50	2.98

**\*\*Dimensions are in inch**  
**\*\*reed sensor and pneumatically actuated is optional**

**Angle valve Pneumatically with Bellow (EUOPE)**



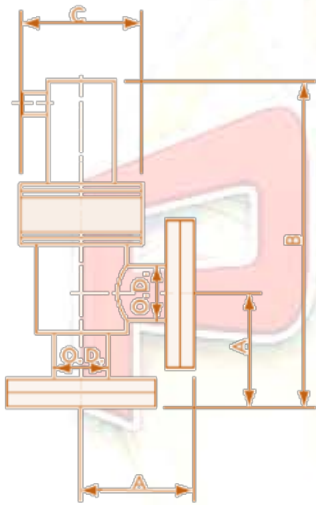
Model No.	A	B	C
PAV-KF16E	40	142	56.8
PAV-KF25E	50	1496	56.8
PAV-KF40E	65	203	75.8
PAV-KF50E	70	246	88.4
PAV-CR16E	38	140	56.8
PAV-CR35E	63	201	75.8

**\*\* reed sensor and pneumatically actuated is optional**



PERFECT VACUUM SOLUTION

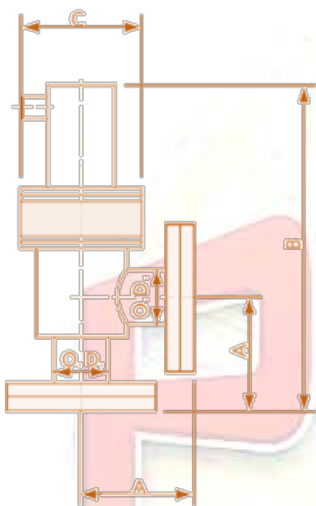
**CF/ISO 63-200 Angle valve Pneumatically with Bellow (usa)**



Model No.	A	B	C
P2AV-CF63A	3.37	10.81	3.92
P2AV-CF100A	4.7	18.06	5.92
P2AV-ISO63A	3.26	10.70	3.92
P2AV-ISO80A	3.51	10.95	4.92
P2AV-ISO100A	4.47	13.86	5.97
P2AV-ISO160A	6.26	17.82	9.45

**\*\*Dimensions are in inch**  
**\*\*reed sensor and pneumatically actuated is optional**

**PERFECT VACUUM SOLUTION**  
**CF/ISO 63-200 Angle valve Pneumatically with Bellow (Europe)**



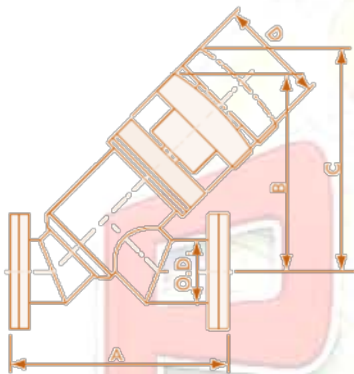
Model No.	A	B	C
P2AV-CF63E	105	294	99.5
P2AV-CF100E	1355	373.6	151.6
P2AV-ISO63E	88	277	99.5
P2AV-ISO80E	98	294	114
P2AV-ISO100E	108	346.6	151.6

**\*\*reed sensor and pneumatically actuated is optional**

**Y-TYPE Inline valve Manual with Bellow**



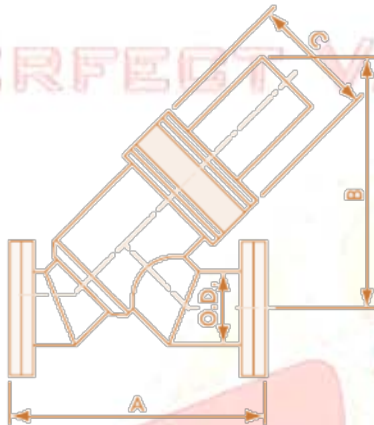
**PERFECT VACUUM SOLUTION**



\*\*Dimensions are in inch

Model No.	A	B	C	D
MYV-KF16A	4.00	3.89	4.43	2.24
MYV-KF25A	4.20	3.89	4.43	2.24
MYV-KF40A	5.12	4.89	5.80	2.98
MYV-KF50A	7.00	5.59	6.83	3.48
MYV-CR16A	4.70	3.89	4.43	2.24
MYV-CR35A	5.24	4.89	4.80	2.98
MYV-CR63A	8.50	6.35	7.59	3.92
MYV-ISO63A	8.26	6.35	7.59	3.92
MYV-ISO100A	13.41	8.99	10.77	5.97

**Y-TYPE Inline valve Pneumatically with Bellow**



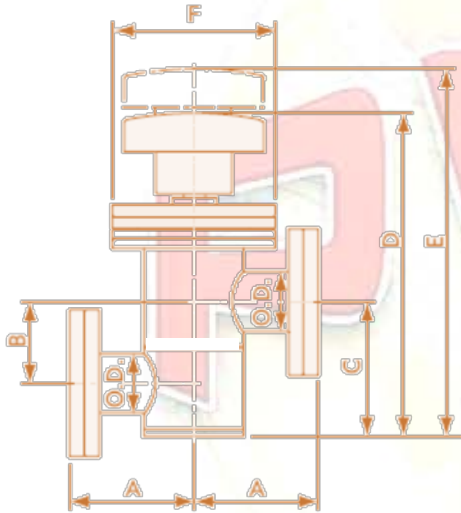
\*\*Dimensions are in inch

\*\*reed sensor and pneumatically actuated is optional

Model No.	A	B	C
PYV-KF16A	4.00	4.15	2.24
PYV-KF25A	4.20	4.16	2.24
PYV-KF40A	5.12	5.71	2.98
PYV-KF50A	7.00	7.15	3.48
PYV-CR16A	4.70	4.15	2.24
PYV-CR35A	5.24	5.71	2.98
P2YV-CR63A	8.50	7.87	3.48



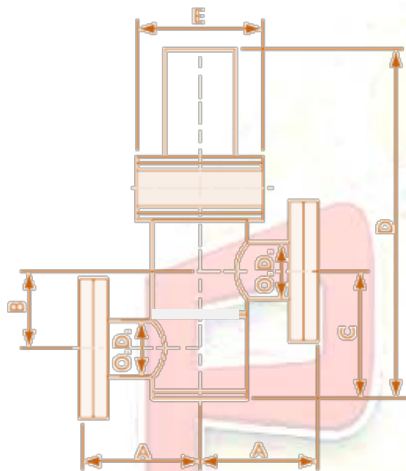
**Z-TYPE Inline valve Manual with Bellow**



Model No.	A	B	C	D	E
MZV-KF16A	2.15	1.13	1.87	5.09	2.24
MZV-KF25A	2.03	1.37	2.25	5.35	2.24
MZV-KF40A	2.40	1.88	3.12	7.16	2.98
MZV-KF50A	3.40	2.62	4.12	8.85	3.48
MZV-CR16A	2.50	1.13	1.87	5.09	2.24
MZV-CR35A	2.46	1.88	3.12	7.16	2.98

\*\*Dimensions are in inch

**Z-TYPE Inline valve Pneumatically with Bellow**



Model No.	A	B	C	D	E
PZV-KF16A	2.15	1.13	1.87	5.90	2.24
PZV-KF25A	2.03	1.37	2.25	6.14	2.24
PZV-KF40A	2.40	1.88	3.12	8.56	2.98
PZV-KF50A	3.40	2.62	4.12	11.05	3.48
PZV-CR16A	2.50	1.13	1.87	5.90	2.24
PZV-CR35A	2.46	1.88	3.12	8.56	2.98

\*\*Dimensions are in inch

\*\*reed sensor and pneumatically actuated is optional



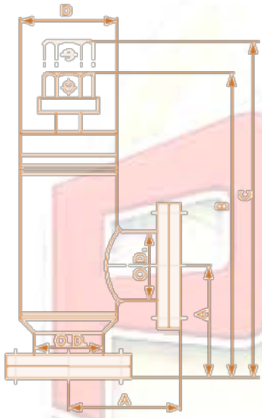
PERFECT VACUUM SOLUTION

PERFECT VACUUM SOLUTION

**PVS Perfect Vacuum Solution**

info@pvs-vacuum.com

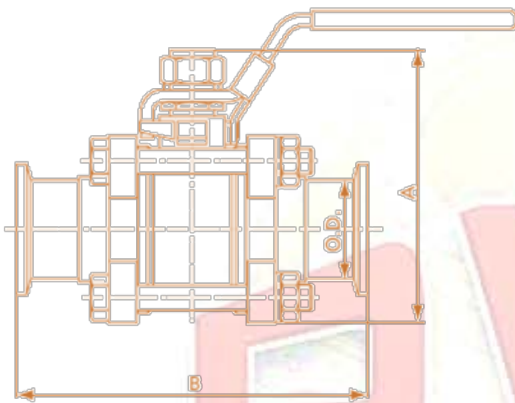
**Bakeable valve**



Model No.	A	B	C	D
BAKAV-CF16	38.1	122.2	133	38.1
BAKAV-CF36	62.5	170	189	54

- Bakeability: 400 °C (open), 300 °C (close)
- Closure Torque: CF16 150kg-cm, Max. 250kg-cm.  
CF35 First 300Kg-cm, Max. 600kg-cm.

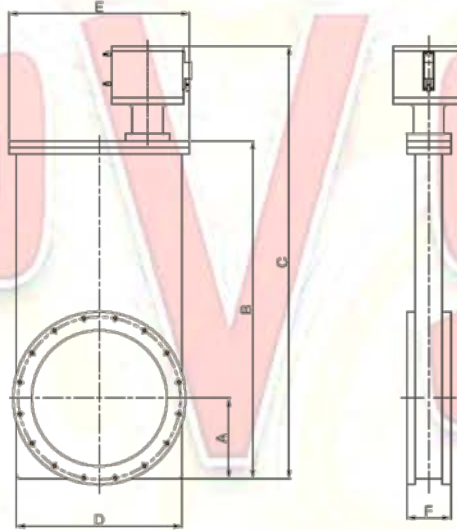
**bALL valve** PERFECT VACUUM SOLUTION



Model No.	A	B
BLV-KF16	64.4	92
BLV-KF25	80	107
BLV-KF40	106.9	130
BLV-KF50	121.7	151
BLV-ISO63	235.7	130
BLV-ISO80	187	210
BLV-ISO100	259	257



**KF/ISO Flange Gate Valve**



Model No.	Flange	P.C.D	Bolt Size	A	B	C	D	E
GV-KF40-M	KF40	-	-	37	122	231.5	74	96
GV-KF40-P	KF40	-	-	37	122	231.5	74	96
GV-KF50-M	KF50	-	-	60	167.5	321.7	90	90
GV-KF50-P	KF50	-	-	60	167.5	321.7	90	90
GV-ISO63-M	ISO63	110	M8x4	55	231	365.9	110	140
GV-ISO63-P	ISO63	110	M8x4	55	231	365.9	110	140
GV-ISO80-M	ISO80	125	M8x8	59.5	252	404	120	150
GV-ISO80-P	ISO80	125	M8x8	59.5	252	404	120	150
GV-ISO100-M	ISO100	145	M8x8	71	279.2	445.2	142	160
GV-ISO100-P	ISO100	145	M8x8	71	279.2	445.2	142	160
GV-ISO160-M	ISO160	200	M10x8	103.5	402.9	568.9	209.4	239.4
GV-ISO160-P	ISO160	200	M10x8	103.5	402.9	568.9	209.4	239.4
GV-ISO200-M	ISO200	260	M10x12	121.8	482	656.2	255	286
GV-ISO200-P	ISO200	260	M10x12	121.8	482	656.2	255	286
GV-ISO250-M	ISO250	309.9	M10x12	154	637	862.6	312.2	352
GV-ISO250-P	ISO250	309.9	M10x12	154	637	862.6	312.2	352
GV-ISO320-M	ISO320	395	M12x12	185	804	1050	370	422
GV-ISO320-P	ISO320	395	M12x12	185	804	1050	370	422
GV-ISO400-M	ISO400	480	M12x16	237	997	1275	490	534
GV-ISO400-P	ISO400	480	M12x16	237	997	1275	490	534
GV-ISO500-M	ISO500	580	M12x16	305	1178	1968	610	670
GV-ISO500-P	ISO500	580	M12x16	305	1178	1968	610	670

*\*\*reed sensor and pneumatically actuated is optional*

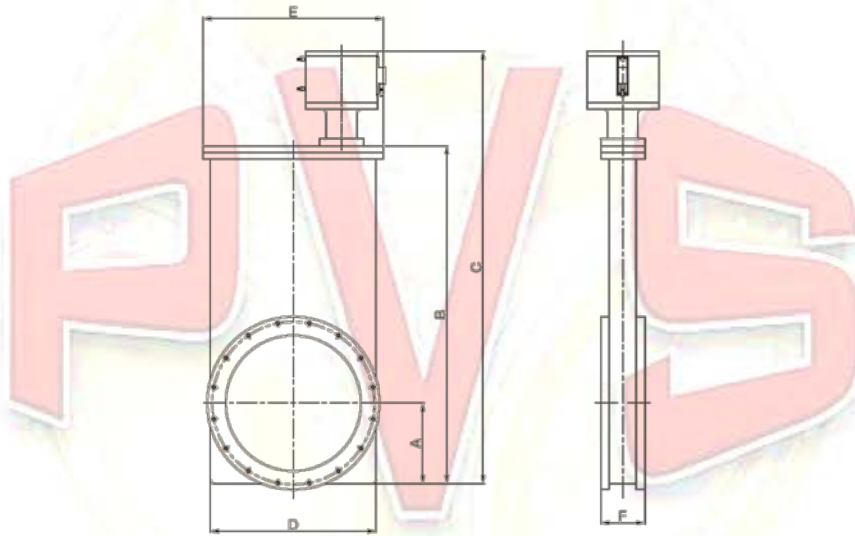


PERFECT VACUUM SOLUTION

**PVS Perfect Vacuum Solution**

info@pvs-vacuum.com

**CF Flange Gate Valve**



Model No.	Flange	P.C.D	Bolt Size	A	B	C	D	E
GV-CF40-M	CF40	58.7	M6x6	37	122	231.5	74	96
GV-CF40-P	CF40	58.7	M6x6	37	122	231.5	74	96
GV-CF63-M	CF63	92.1	M8x8	55	231	365.9	110	140
GV-CF63-P	CF63	92.1	M8x8	55	231	365.9	110	140
GV-CF100-M	CF100	130.2	M8x16	71	279.2	445.2	142	160
GV-CF100-P	CF100	130.2	M8x16	71	279.2	445.2	142	160
GV-CF150-M	CF150	181	M8x20	103.5	402.9	568.9	209.4	239.4
GV-CF150-P	CF150	181	M8x20	103.5	402.9	568.9	209.4	239.4
GV-CF200-M	CF200	231.8	M8x24	121.8	482	656.2	255	286
GV-CF200-P	CF200	231.8	M8x24	121.8	482	656.2	255	286
GV-CF250-M	CF250	284	M8x32	154	637	862.6	312.2	352
GV-CF250-P	CF250	294	M8x32	154	637	862.6	312.2	352

*\*\*reed sensor and pneumatically actuated is optional*



PERFECT VACUUM SOLUTION

PERFECT VACUUM SOLUTION

**PVS Perfect Vacuum Solution**

info@pvs-vacuum.com